



**RCPAQAP**  
RCPA Quality Assurance Programs

# Anatomical Pathology Update

Julia Pagliuso, Manager Tissue Disciplines

*Protecting patients*

# One Company, One Team

- 2011-2017 – Centralisation of all programs onto one site in Sydney
- Harmonisation of processes
- Integration of Information Technology to ensure customer focus and satisfaction
- Sharing of information through education and publications





**Neeta**



**Zenobia**



**Janelle**

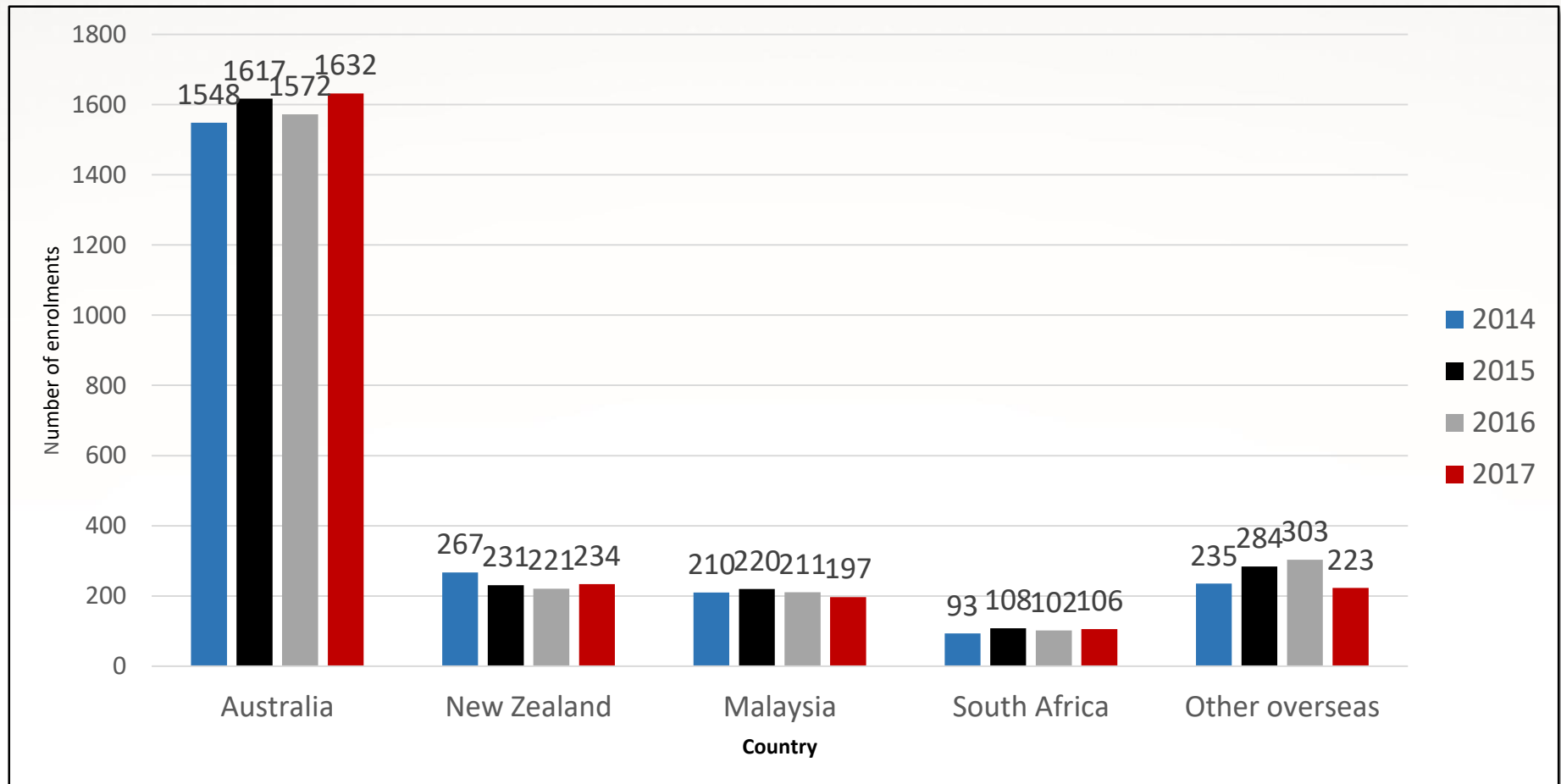


# OUR GLOBAL REACH



The RCPA Quality Assurance Programs has participants around the world in over 60 countries.

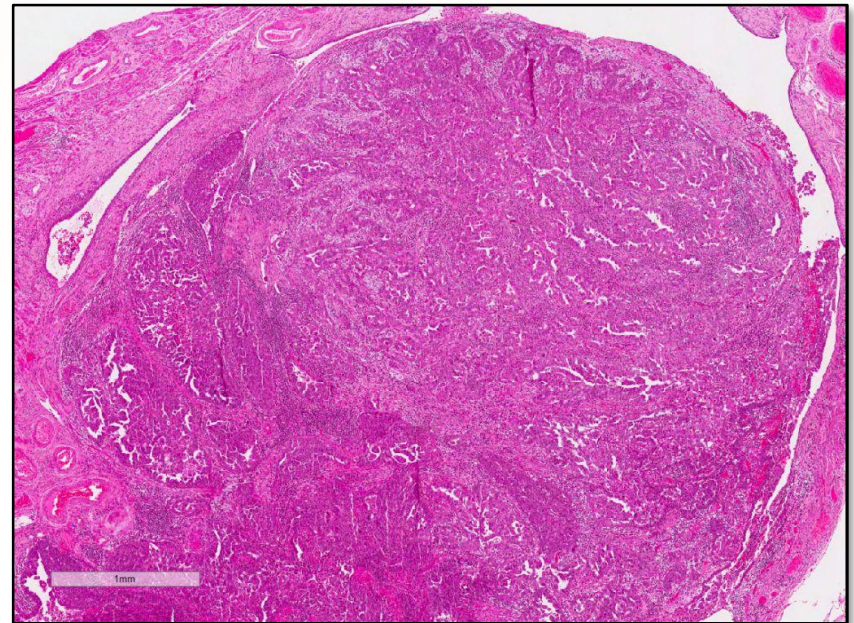
# Enrolments by Country (2014-2017)



# What is new for the Anatomical Pathology Quality Assurance Programs in 2018?

**Enrolments for 2018 now open**

- Changes to nomenclature
- Electron Microscopy split into Technical and Diagnostic programs
- Advertising antibodies/stains that will be assessed prior to enrolments opening
- Decreasing surveys for Breast and Oral to one survey per year. Introducing smaller 5 case programs to be rotated eg 2018 Thoracic and Haematopathology





# What is new for the Anatomical Pathology Quality Assurance Programs in 2018?

Enrolments for 2018 now open

Organisation RCPA Quality Assurance Programs Allow Overdue Invoices ☐

[Edit](#) [Delete](#) [Close](#) [Certificates](#)

**Participant Contacts** [New Participant Contact](#) [Participant Contacts Help](#)

Action	Participant Contact Name	Discipline Name	Participant Number	Contact	Primary Contact	Email	IsActive	Contact Role	Participant Enrolment Status	Email Opt Out
<a href="#">Edit</a>   <a href="#">Del</a>	<a href="#">PCN-104722</a>	ANATOMICAL PATHOLOGY	999	<a href="#">Helene Testy</a>	<input type="checkbox"/>	<a href="#">rav.oreo@rcpaqap.com.au</a>	<input checked="" type="checkbox"/>	Director of Pathology	Enrolled	<input type="checkbox"/>
<a href="#">Edit</a>   <a href="#">Del</a>	<a href="#">PCN-106933</a>	ANATOMICAL PATHOLOGY	999	<a href="#">Jack Sparrow</a>	<input type="checkbox"/>	<a href="#">jack.sparrow@rcpaqap.com.au.test</a>	<input checked="" type="checkbox"/>	Business Manager	Enrolled	<input type="checkbox"/>
<a href="#">Edit</a>   <a href="#">Del</a>	<a href="#">PCN-106935</a>	ANATOMICAL PATHOLOGY	999	<a href="#">Super Man</a>	<input type="checkbox"/>	<a href="#">sm@123.abc.idi</a>	<input checked="" type="checkbox"/>	Chief Scientific Officer	Enrolled	<input type="checkbox"/>
<a href="#">Edit</a>   <a href="#">Del</a>	<a href="#">PCN-107724</a>	ANATOMICAL PATHOLOGY	999	<a href="#">Julia Paqliuso</a>	<input type="checkbox"/>	<a href="#">julia.paqliuso@rcpaqap.com.au</a>	<input checked="" type="checkbox"/>	Business Manager	Enrolled	<input type="checkbox"/>
<a href="#">Edit</a>   <a href="#">Del</a>	<a href="#">PCN-110338</a>	ANATOMICAL PATHOLOGY	999	<a href="#">Anatomical Participant User</a>	<input type="checkbox"/>	<a href="#">anatomical.pathology@rcpaqap.com.au.participant</a>	<input checked="" type="checkbox"/>	Other	Enrolled	<input type="checkbox"/>
<a href="#">Edit</a>   <a href="#">Del</a>	<a href="#">PCN-111589</a>	ANATOMICAL PATHOLOGY	999	<a href="#">The Hulk</a>	<input type="checkbox"/>	<a href="#">the.hulk@rcpaqap.com.au</a>	<input checked="" type="checkbox"/>	Scientific Officer	Enrolled	<input type="checkbox"/>
<a href="#">Edit</a>   <a href="#">Del</a>	<a href="#">PCN-048236</a>	ANATOMICAL PATHOLOGY	999	<a href="#">Anatomical Admin User</a>	<input checked="" type="checkbox"/>	<a href="#">anatomical.pathology@rcpaqap.com.au</a>	<input checked="" type="checkbox"/>	QA Officer	Enrolled	<input type="checkbox"/>
<a href="#">Edit</a>   <a href="#">Del</a>	<a href="#">PCN-057273</a>	ANATOMICAL PATHOLOGY	999	<a href="#">Imran Hirani</a>	<input type="checkbox"/>	<a href="#">ihirani@salesforce.com</a>	<input checked="" type="checkbox"/>	Other	Enrolled	<input type="checkbox"/>
<a href="#">Edit</a>   <a href="#">Del</a>	<a href="#">PCN-078799</a>	ANATOMICAL PATHOLOGY	999	<a href="#">Customer Service</a>	<input type="checkbox"/>	<a href="#">customer.service@rcpaqap.com.au</a>	<input checked="" type="checkbox"/>	Other	Enrolled	<input type="checkbox"/>
		ANATOMICAL						Laboratory		

## myQAP data entry


# What is new for the Anatomical Pathology Quality Assurance Programs in 2018?

## Enrolments for 2018 now open

https://www.rcpaqap.com.au/product-catalogue/2017 2017 Product Catalogue Arc... myQAPLogin myQAPLogin

View Favorites Tools Help

Royal College of Pathologists of Australasia Quality Assurance Programs Online Data Entry myQAP



RCPAQAP  
RCPA Quality Assurance Programs

Search

Home About Us Events Products News Contact Us

### 2017 Product Catalogue

This quote functionality is available ONLY for customers who are not currently enrolled in the RCPA Quality Assurance Programs. If you are an existing customer of the RCPAQAP, please log into myQAP to view module prices

Most RCPAQAP services are offered over a calendar year, January to December.

While the major enrolment period is August to December of the preceding year, most disciplines accept enrolments throughout the year.

#### Request For Quote

Simply click on your Discipline/System below for the corresponding Programs & Surveys to display for selection.


Alternatively, please feel free to download the full catalogue here >> [2018 Product Catalogue](#).

#### My Quote Request


No programs in the Quote.

#### Disciplines


- Anatomical Pathology
- Chemical Pathology
- Cytopathology
- Haematology
- Immunology
- KIMMS
- Microbiology
- Molecular Genetics
- Serology
- Synovial Fluid
- Transfusion



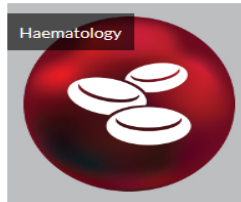
Anatomical Pathology



Chemical Pathology



Cytopathology



Haematology

Online product  
catalogue



# What is new for the Anatomical Pathology Quality Assurance Programs in 2018?

Enrolments for 2018 now open

## Immunohistochemistry Proficiency Programs

### Immunohistochemistry & Technical Neuropathology Module

Program Module Description	Proficiency testing for laboratories processing neuropathology specimens. This is a combined module where unstained formalin fixed paraffin sections are provided for immunohistochemical and special staining.
Cases and Frequency	2 exercises per survey / 1 survey per year
Tests	IDH-1 – R132H (alternate EMA) and Amyloid Survey Numbers: TN2018-1; IN2018-1

### Immunohistochemistry General Module

Program Module Description	Proficiency testing for laboratories processing immunohistochemistry. A variety of markers are assessed each year. Unstained formalin fixed paraffin sections comprising of composite tissue block to be stained for 3 general markers.
Cases and Frequency	3 exercises per survey / 1 survey per year
Tests	D240 (alternate CK5/6); Chromogranin; Hepar1 (alternate AE1/AE3) Survey Numbers: IHG2018-1

# What is new for the Anatomical Pathology Quality Assurance Programs in 2018?

Enrolments for 2018 now open

**RCPAQAP**  
RCPA Quality Assurance Programs

Home | Enrolments | Result Entry | Data Analysis | Requests | Invoices | Certificates | News | Reports | Documents | Forms | Profile | **Calendar** | Help

Select Discipline to download Survey Schedule Calendar

☒ ANATOMICAL PATHOLOGY  
☐ CYTOPATHOLOGY  
☐ KIMMS  
☐ SEROLOGY  
☐ BIOSECURITY  
☐ HAEMATOLOGY  
☐ MICROBIOLOGY  
☐ SYNOVIAL FLUID  
☐ CHEMICAL PATHOLOGY  
☐ IMMUNOLOGY  
☐ MOLECULAR GENETICS  
☐ TRANSFUSION

Today | November 2017 | Print | Week | Month | Agenda

Sun	Mon	Tue	Wed	Thu	Fri	Sat
29	30	31	1 Nov	2	3	4
5	6	7	8	9	10	11
12	13	14	15	16	17	18
19	20	21	22	23	24	25

Subscribe/Download Survey Schedule Calendars

For CSV Download, if using Internet Explorer please right-click the CSV Download button and select Save Link As... to save the calendar .csv file.

ANATOMICAL PATHOLOGY

[Subscribe Outlook Calendar](#) [Subscribe Other Calendar](#) [CSV Download](#)

## iCalendar

# What is new for the Anatomical Pathology Quality Assurance Programs in 2018?

Enrolments for 2018 now open



RCPAQAP  
RCPA Quality Assurance Programs

Home Enrolments Result Entry Data Analysis Requests Invoices Certificates News Reports **Documents** Forms Profile Training Calendar Help

Filters

Discipline   
Category   
Enrolment Year   
Program   
Cycle   
Document Name

Search

Combined participant handbook  
Combined assessment handbook

Documents

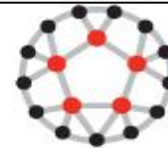
Discipline	Category	Enrolment Year	Document Name	Program	Module
ANATOMICAL PATHOLOGY	Forms		<a href="#">Anatomical Pathology Action Sheet</a>		
ANATOMICAL PATHOLOGY	Forms		<a href="#">Anatomical Pathology Donation of Survey Material Form</a>		
ANATOMICAL PATHOLOGY	Forms	2018	<a href="#">Customs declaration label</a>		
ANATOMICAL PATHOLOGY	Forms	2018	<a href="#">Customs declaration statement</a>		
ANATOMICAL PATHOLOGY	Handbooks	2017	<a href="#">2017 Anatomical Pathology Participant Handbook</a>		
ANATOMICAL PATHOLOGY	Handbooks	2018	<a href="#">2018 RCPAQAP Data Analysis Assessment Criteria</a>		
ANATOMICAL PATHOLOGY	Handbooks	2018	<a href="#">2018 RCPAQAP Participant Handbook</a>		
ANATOMICAL PATHOLOGY	Instructions	2017	<a href="#">GN2017-2 Instruction to Participants</a>	General Diagnostic Module	General Diagnostic - Lab
ANATOMICAL PATHOLOGY	Instructions	2017	<a href="#">IA2017-1 Instructions to Participants</a>	Immunohistochemistry Breast Markers Audit	
ANATOMICAL PATHOLOGY	Instructions	2017	<a href="#">TF2017-1 Instructions to Participants</a>	Technical - Frozen Section Module	
ANATOMICAL PATHOLOGY	Instructions	2017	<a href="#">TM2017-3 Instructions to Participants</a>	Technical General Module	
ANATOMICAL PATHOLOGY	Instructions	2017	<a href="#">Transmission Electron Microscopy Module - TEM2017-1- Instructions to Participants</a>	Electron Microscopy Module	
ANATOMICAL PATHOLOGY	Schedules	2017	<a href="#">2017 Anatomical Pathology Survey Schedule</a>		
ANATOMICAL PATHOLOGY	Schedules	2018	<a href="#">2018 Anatomical Pathology Survey Schedule</a>		
ANATOMICAL PATHOLOGY	Education, Other Forms, Presentations		<a href="#">2017 Autoantibody Seminar Registration Form</a>		



# What is new for the Anatomical Pathology Quality Assurance Programs in 2018?

Enrolments for 2018 now open

## Cytopathology Non-gynaecological Competency Assessment Program – General



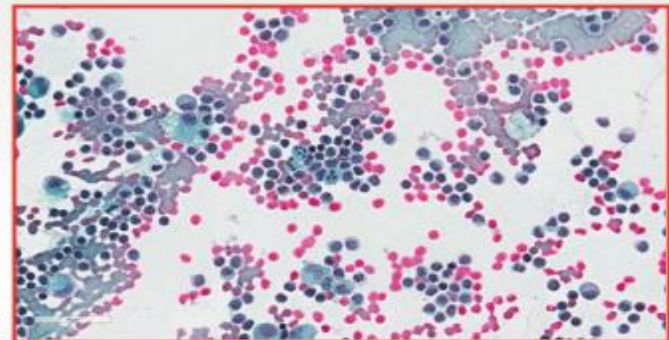
**RCPAQAP**  
RCPA Quality Assurance Programs

Exit quiz

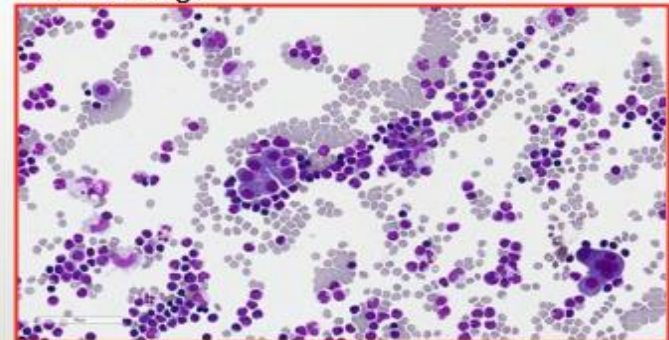
### Question 2

The photomicrographs show high power views of a pleural effusion. The morphology is suggestive of:  
(Please select the correct answer, and then click Submit to check your answer)

- ☐ Reactive lymphocytosis
- ☐ Small cell carcinoma
- ☐ Acute inflammation
- ☐ Atypical lymphoid cells
- ☐ Hodgkin lymphoma



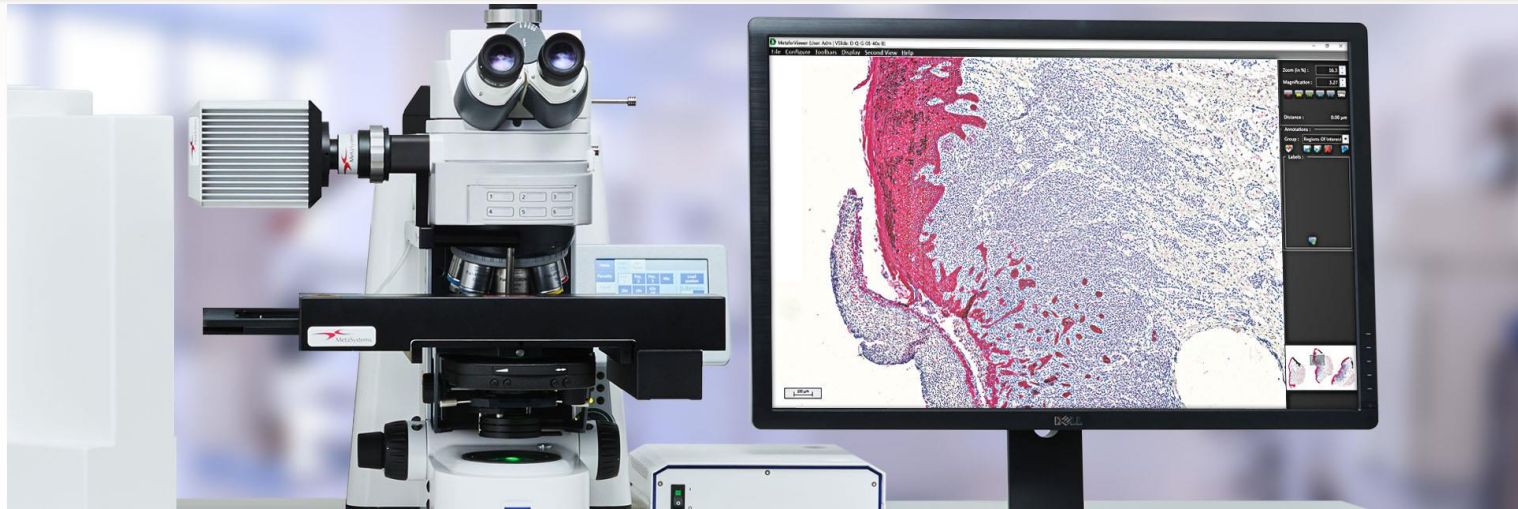
Click to enlarge



## Competency modules

# What is new for the Anatomical Pathology Quality Assurance Programs in 2018?

Enrolments for 2018 now open



- Metasystems
- Carl Zeiss microscope
- Ability to z-stack

## New scanner

# What is new for the Anatomical Pathology Quality Assurance Programs in 2018?

Enrolments for 2018 now open

- Use on any mobile device eg ipad
- No flash/high bandwidth
- Introduce training



## New hosting platform



15 March 2018

9:50am

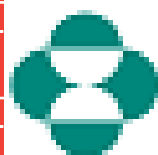
10:00am

Welcome coffee

Introduction to PD-L1 testing for non-small cell lung carcinoma  
A/Prof Wendy Cooper, RPAH

1

1



**MSD**

INVENTING FOR LIFE

non-small cell lung carcinoma

experience, challenges and outcomes

11:20am

Australian pilot results  
Julia Pagliuso, RCPAQAP

1

1

1



Interpretation tool  
Roche, Poundbury Cancer Institute, UK

Technical assessment – criteria  
Roche, RCPAQAP

1:00pm

Mock PD-L1 technical assessment – review of submitted slides

2

2



**Agilent Technologies**

Validation

2:30pm

Ventana – presentation and Q&A

2:30pm

Experience with PD-L1 implementation

3:30pm

3:30pm

3:30pm



TEA

Validation and Q&A

Test results compared with real assessment

**BIO SYSTEMS**

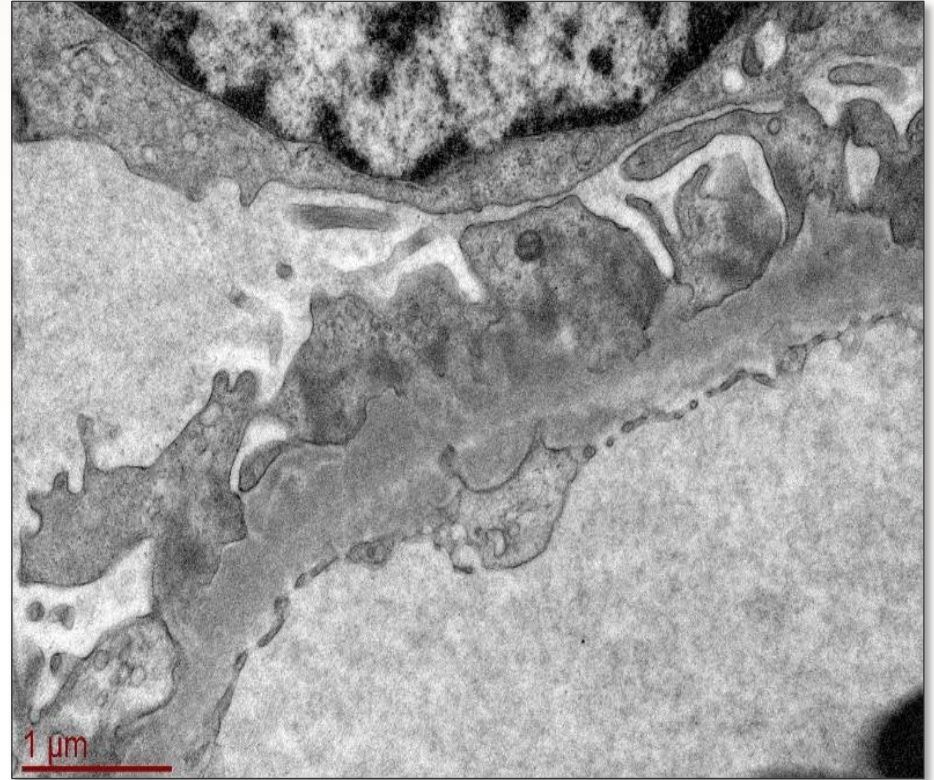
Leica, RCPAQAP

4:00pm

MEETING CLOSE

# Electron Microscopy Workshop

- Weekend 20<sup>th</sup> – 21<sup>st</sup> October 2018
- Eric Wartchow and Gary Mierau from Children's Hospital Colorado plus local speakers
- Mostly diagnostic, some technical will be covered.
- Target audience: registrars, pathologists and scientists working in electron microscopy



# Acknowledgements

- Cambridge University – for the YouTube video
- Informatics team – for all the new technology
- Zenobia Haffajee – for coordinating the IHC modules
- Neeta Lal – for coordinating the technical modules
- John Sioufi – for coordinating the competency modules
- Advisory committees – for valuable feedback, advice and contribution







