

HGVT

Org. No. A003523F

PARAFFINALIA NEWSLETTER

VOLUME 27, NUMBER 2
June 2023

The HGVT aims to provide a dynamic continuing education program in which all persons with an interest in Histology and Histotechnology are freely invited to participate.

CONTENTS:

President's Report

Upcoming One Day HGVT Seminar – 'Lifting the Lid'

Details for HGVT Trivia Night 2023

Under the Microscope with Rebecca Nicolussi

IHC Antibody Spotlight – Neuron-Specific Enolase (NSE)

The Barrier Functions of Epithelial Tissues

Future Events 2023

Committee Page

The members of the Histology Group of Victoria and Tasmania 2020 are:

Name	Institution
Kerrie Scott-Dowell	Dorevitch Pathology/Leica Biosystems
Adrian Warmington	Ballarat OSM
Mark Bromley	Sullivan Nicolaides Pathology
Elizabeth Baranyai	Cabrini Health
Alison Boyd	Northern Health
Kellie Vukovic	Melbourne Pathology
Samantha Arandelovic	Mater Hospital Brisbane
Snejana Ursache	Alfred Hospital
Imogen Campbell	Alfred Hospital
Alistair Townsend	Royal Hobart Hospital
Cristine Gorringe	Royal Hobart Hospital
Meghan Leo	Histolab
Yashi Xie	St. Vincent's Hospital
Bronwyn Christiansen	Royal Children's Hospital
Hazel Chambers	Royal Children's Hospital
Bindi Bates	Leica Biosystems
Alex Johnston	Leica Biosystems

Contact us at

<http://www.hgvt.org.au/contact-us>

Membership enquiries: membership@hgvt.org.au

General enquiries: secretary@hgvt.org.au

Sponsorship/Advertising enquiries: trade@hgvt.org.au

Newsletter enquiries: editor@hgvt.org.au

Advertising for the next edition of Paraffinalia closes: **25th August 2023**

Paraffinalia Rates:

**A4 Electronically Submitted \$400 (no GST) Flat Rate Per page
\$1200 yearly package**

**Positions Vacant- No Logo up to 75 words
FREE to email membership
FREE list on Website**

**Used Equipment- 50 words – no logos/no pictures
FREE
A4 with logo \$200 (no GST)**

Articles & Reports:

Author enquiries and readers wishing to contribute articles or reports can contact the Editor - editor@hgvt.org.au

Please email articles (preferably Microsoft Word format) for inclusion in the next edition to editor@hgvt.org.au All items submitted for publication will then become the sole property of the Histology Group of Victoria Inc.

Disclaimer:

Any opinions expressed in this publication are solely those of the contributing author and are not necessarily reflective of the Histology Group of Victoria Incorporated or the editor.

NOTE: No responsibility is assumed by the Histology Group of Victoria Incorporated for any injury and/or damage to persons or property as a matter of products liability, negligence or otherwise, or from any use or operation of any methods, products, instructions or ideas contained in the material herein. It is the user's responsibility to ensure that all procedures are carried out according to appropriate Health and Safety requirements.

Copyright of this newsletter "Paraffinalia" is held by the Histology Group of Victoria Incorporated. No material may be reproduced in part or in whole without written consent from the copyright holders. All rights reserved.

President's Report – Behind the Bench

Chilly Cheers from across the bench!

Hoping you are all keeping healthy, warm and managing to find some fun and interesting cases in your workplace.

With the construction and disruptions around Peter Mac, and being in the depths of winter, we have taken the step of moving forward with the next scientific meeting to be online only on the 29th June. We have Kellie and Alistair showing us prostate specimen handling from grossing, through processing to immunochemistry. Slip into your PJs and zoom in, because I am pretty sure one of those presenters will be dressed in her flannelette jamas.

The committee has been working hard towards a State (actually States- Victoria and Tasmania) activity -The Workshop and Day Seminar on the 13th and 14th of October is titled 'Lifting the Lid', look out for the flyer in this issue!

We have worked hard to keep costs to a minimum and sneakily have managed to get it to you for a tax deduction in this year's return.

The full program will be provided as soon as possible, I can tell you the workshop involves virtual reality anatomy and access to the Museum of Anatomy and Pathology at Melbourne Uni.

Look out for some Trivia fun in August as well.

Kerrie Scott
HGVT President





Org.No. A0035235F

One Day Seminar



Lifting the Lid

Saturday October 14th 2023

Workshop Friday October 13th 2023

SEMINAR

Rendezvous Hotel Melbourne
328 Flinders St, Melbourne VIC 3000
Program to follow

WORKSHOP (Histology – Virtual Reality)

Melbourne University
Grattan St, Parkville VIC 3010

Prospective speakers welcome to submit topic and short summary to
secretary@hgvt.org.au

BOOK at <https://www.trybooking.com/CIZKU>





TRIVIA NIGHT 2023

Date: Friday 4th August

Time: 6.30pm-9.30pm

Location: Prince Patrick Hotel
135 Victoria Parade
Collingwood 3066

Price: \$25 per person
(Tables of 10)

Including: Main meal, one house beer/wine/soft drink on arrival, Trade sponsored prizes and rounds with a professional host

Additional drinks at bar prices.

**Payment and food orders due by Friday 21st July. Please be quick as tables are limited and sold on a first in best dressed basis!
(Menu to follow at a later date)**

Limited street parking is available



PAYMENT DETAILS
PLEASE RETURN THIS SLIP WITH YOUR GROUP
PAYMENT – MENU TO FOLLOW

Email: kellie_vukovic@hotmail.com or kellie.vukovic@mps.com.au

Mail: Attention: Kerrie Scott-Dowell
Leica Biosystems
495 Blackburn Rd
Mt Waverley VIC 3149

Cheque/Money Order (please make out to 'Histology Group of Victoria and Tasmania')

Direct deposit (please leave name as a reference)

Account Name: Histology Group of Victoria and Tasmania
BSB: 063 449
Account no.: 10065881

Please forward this information to Kellie Vukovic via email listed above after payment.

Name of Institution: _____

Contact Name: _____

Contact Number: _____

Contact Email: _____

Number of people on table (Max 10): _____

Dietary Requirements:



Sustainability: Our Commitment To You

At MetaGene we are committed to making a positive impact in the Australian community by consistently seeking to improve our practices and philanthropic goals. Some of our sustainability practices include:

- our eskies used to ship your products are manufactured in Australia by Australia's leading custom polystyrene moulder, 100% Australian Owned, the company also recycles our styrofoam eskies!
- our packing materials are landfill biodegradable and sourced from an Australian owned Melbourne company

For more information visit: www.metagene.com.au/giving-back



Q *Series*
a Biocare Brand

BIOCARE
M E D I C A L

Are you looking for an extensive ready to use antibody library for your Leica Bond automated IHC platform?

Biocare Q Series Has Your Laboratory Covered with ready to use 7ml antibodies formulated specifically for the Leica Bond.

A NEW KIND OF ANTIBODY FOR YOUR LEICA BOND

Some of the top selling Q Series antibodies include:

Q Series Has Your Laboratory Covered

- Ready to Use for Leica Bond Instruments
- 7mL Ready to Use Antibodies
- Easy to Use Protocols Optimized by Biocare

- **p40 (M) / p40 (P)**
- **SOX10**
- **PRAME [EPR20330]**

*Q Series™ antibodies are developed solely by Biocare Medical LLC and do not imply approval or endorsement of Biocare antibodies by Leica Biosystems. Biocare and Leica Biosystems are not affiliated, associated or related in any way. Leica, Leica Biosystems, BOND-MAX and BOND-III are trademarks of Leica Biosystems.

Contact us for more information or a quote.

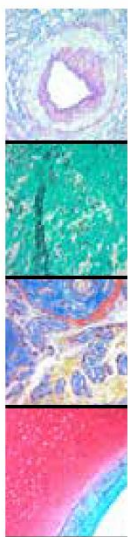
www.metagene.com.au - 1800 788 498 - admin@metagene.com.au

Introducing new special stain solutions to take your laboratory to the next level

Q: Do you have trouble finding specialised stain kits for your workflow solution?



A: ScyTek continues to expand their special stains range to meet the needs of busy laboratories.



1. **Glycogen, Elastin, Mucin Stain Kit** for use in the metachromatic staining of glycogen, elastin, and mucin.
2. **Modified Gomori Methenamine-Silver Nitrate (GMS) Stain Kit** for use in the histologic visualisation of fungi, basement membrane and some opportunistic organisms.
3. **Martius Scarlet Blue (MSB) Stain Kit** for use in the histological demonstration of fibrin, muscle, collagen, and erythrocytes.
4. **Safranin O Stain Kit** for use in demonstrating glycosaminolycagns (GAGs) in cartilage sections.

Trajan is proud to be partnering with ScyTek Laboratories to deliver quality pathology solutions to the Australian market. With 30 years' experience manufacturing quality reagents, ScyTek has something for every laboratory.

Showing the right path

UNDER THE MICROSCOPE with Rebecca Nicolussi

What is your current job?

My current role is Associate Scientist, working my way towards full Scientist.

How long have you been working in your role?

3 years, started as a test operator and after a couple of months I got promoted into a new lab technician role, overseeing the team of test operators while taking on some science activities at the same time. Being in that role.

What piece of advice would you give to people who may want to follow your career path?

Honestly, I would stress less about the future during high school. Growing up there is a lot of pressure to know what you want to do and who you want to be. But what isn't spoken about enough is that this might continuously change and that there are several pathways to get you there. There are opportunities everywhere, you just need to get your foot in the door and then show people what you're capable of!



What's a goal you have for this year?

Increasing and maintaining my overall health, both mentally and physically has always been a big goal for me. Working full time on mentally stimulating projects can get exhausting. Taking the time for establishing self-care routines outside of work can have a great impact on overall wellbeing.

What music is on your playlist at the moment?

A range of genres for whichever mood I'm in! After seeing him live, I've been listening to Lost Frequencies a lot – the sound is Lo-Fi beats and super relaxing. But coming up to the weekend, more energetic, pump-up music submerges into the playlist.

Other than your current role, what is another scientific topic that interests you?

Molecular genetics is a really interesting field to me. In particular, inheritance patterns and epigenetics are appealing topics to me. Forensics is also a field that I've always been interested in.

What movie or TV show do you think everyone should watch?

The Office US is a must watch for everyone.

If you could live anywhere in the world for a year, where would you pick?

The island of Bora Bora in French Polynesia. My Mum has hyped it up for a long time, so I would love to get there one day.

If you could choose two famous people, past or present, to have dinner with, who would it be?

Deepak Chopra and Oprah Winfrey.

Oprah's energy is very uplifting. She's very good at bringing awareness to positivity, highlighting silver linings within even the most of dire situations. Deepak was an endocrinologist who had a very stressful life, but then found mindfulness and meditation. Everything he says is very emotionally intelligent, filled with open mindedness and self awareness.

Together in their mediation series, they are a dynamic duo, where Deepak builds on Oprah's positivity to dive deeper into the mechanics of how and why.

HISTOCORE MICROTOME RANGE

NEW! HISTOCORE WATER BATH AND SLIDE DRYER

LIMITED TIME OFFER!

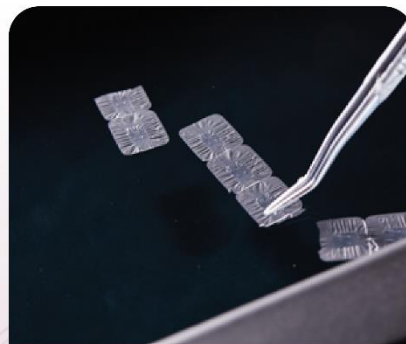
To Celebrate the release of the new HistoCore Water Bath and Slide Dryer Leica Biosystems is proud to introduce a limited introductory offer:

For a limited time, receive a **New HistoCore Waterbath and Slide Dryer at no charge** with the purchase of any instrument from the HistoCore microtome range!

Offer is valid to August 31, 2023.



Detachable water tray OLED touch panel with Intuitive user interface Heating temperature: Up to 60°C.



Black water tray and LED illumination to easily identify floating sections.



30 slide capacity, 45° angled heated rack eases slide pick up. Connects directly to the HistoCore Water Bath.

HistoCore BIOCUT



HistoCore MULTICUT



HistoCore AUTOCUT



CONTACT YOUR LOCAL LEICA BIOSYSTEMS SALES REPRESENTATIVE TODAY!

TERMS AND CONDITIONS:

This offer cannot be used in combination with any other Leica Biosystems discounts or promotional offers, two dryer option also available, please consult your sales representative. This offer expires August 31, 2023. Offer valid in Australia and New Zealand only

**Advancing Cancer Diagnostics
Improving Lives**



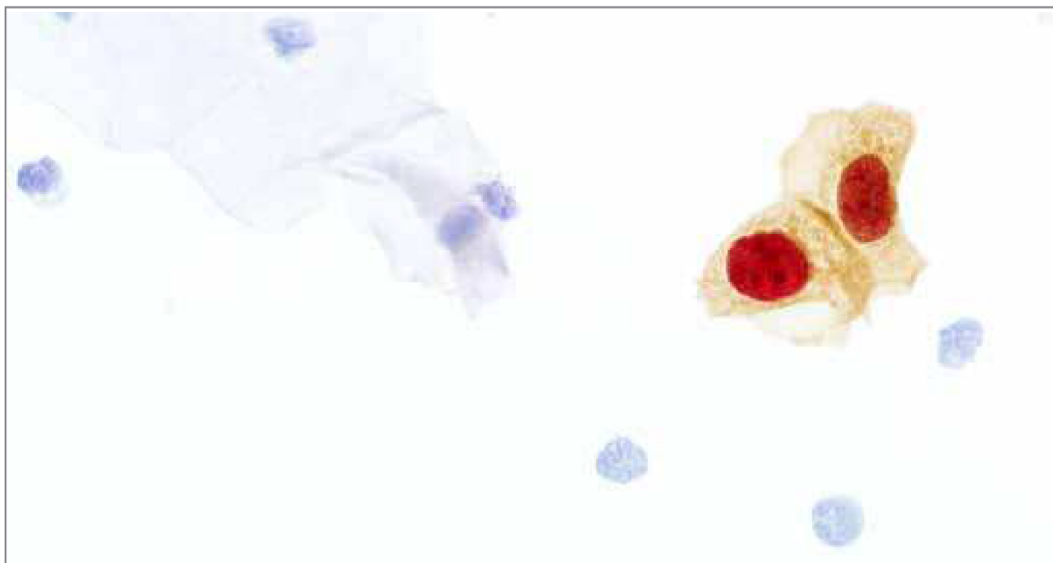
FOR IN VITRO DIAGNOSTIC USE

Copyright © 2022 Leica Biosystems, a division of Leica Microsystems Inc. All Rights Reserved. LEICA and the Leica logo are registered trademarks of Leica Microsystems IR GmbH.

230477 Rev A - 05/2023

CINtec PLUS Cytology

fully automated on the BenchMark GX, XT and ULTRA instruments



Positive, dual-stained result for CINtec PLUS Cytology

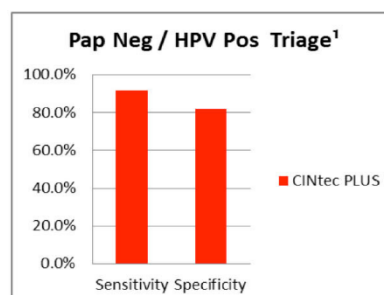
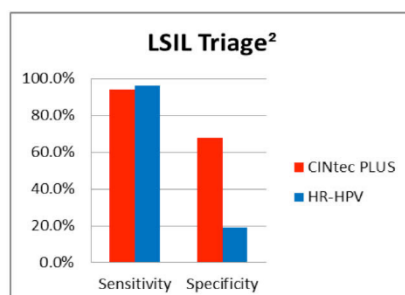
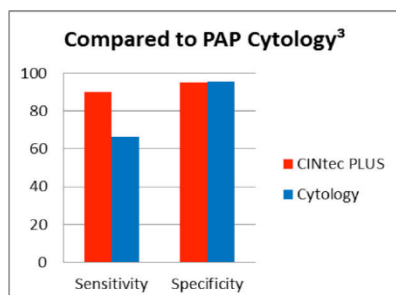
A faster way to help identify women who need immediate management—and those who don't.

The goals of a cervical cancer screening program are to identify as many women as possible at risk of precancer, while avoiding unnecessary treatment of women who do not have disease. Today's management options have been useful in reducing the incidence and mortality rate of cervical cancer, but are limited in their ability to

provide an optimal balance of sensitivity and specificity. Therefore, they may either miss disease or deliver high false-positive results, potentially leading to a large number of unnecessary interventions.

Now fully automated, the CINtec PLUS Cytology test, exclusively from Roche, combines high sensitivity and high specificity in a single test making it a valuable tool in the management of cervical disease.^{1,2,3}

CINtec PLUS Cytology sensitivity and specificity in screening for CIN2+





Org. No. A0035235F

HGVT Scientific Meeting

Date: 29th June, 2023

Prostate Cut Up with Kelly Vukovic

Big Blocks and PIN 4 staining with Alastair Townsend

(Recorded virtually via Zoom)

IHC ANTIBODY

SPOTLIGHT: NSE

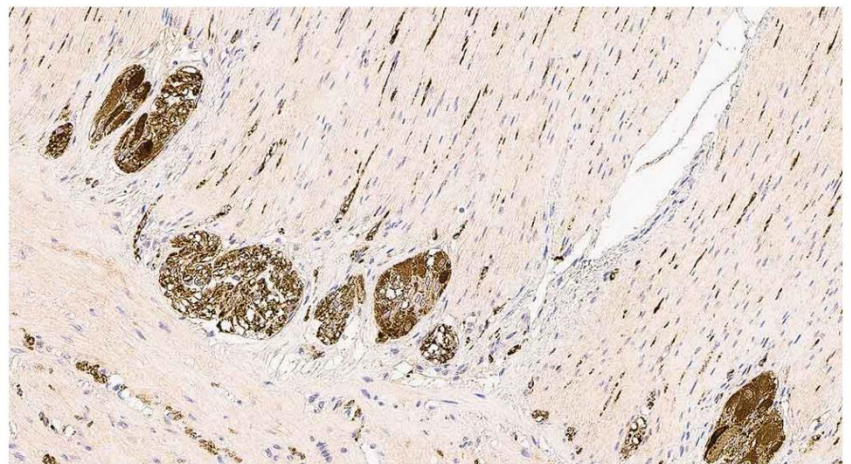
Neuron-specific enolase (NSE) protein plays a significant role in pathology, particularly in the field of neurology and oncology. NSE is an enzyme involved in glycolysis, primarily found in neurons though it can also be present in neuroendocrine cells and certain tumors.

In neurological pathology, NSE can be used as a biomarker to assess the extent of neuronal damage or injury. Increased levels of NSE in cerebrospinal fluid or blood can indicate neuronal death or damage caused by conditions such as stroke, traumatic brain injury, or neurodegenerative disorders like Alzheimer's or Parkinson's disease. ^[1]

Monitoring NSE levels helps clinicians in diagnosing and evaluating the severity of these conditions, as well as predicting patient outcomes.

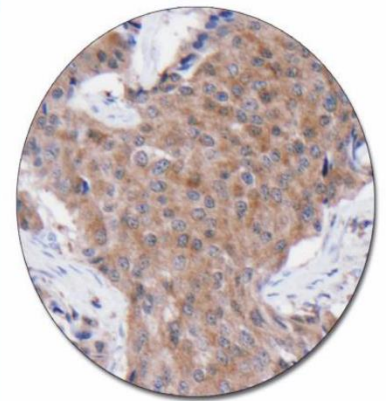
In oncology, NSE is relevant in the diagnosis and monitoring of certain neuroendocrine tumors, such as small cell lung cancer and neuroblastoma. ^[2] NSE can be used in conjunction with other diagnostic tools to aid in the detection, staging, and monitoring of treatment response in these malignancies.

Furthermore, NSE's relevance extends beyond neurology and oncology. It has also been investigated in other pathological conditions, including cardiac diseases, systemic inflammation, and certain metabolic disorders. ^[1] Research is ongoing to explore the potential diagnostic and prognostic value of NSE in these areas.



(Upper) Human large bowel: Note the staining in the neuronal elements and the ganglia of the longitudinal and circular smooth muscle.

(Lower Right) Carcinoid tumor: The neoplastic cells show a moderate to strong granular cytoplasmic staining reaction.



References

1. Haque A, Polcyn R, Matzelle D, Banik NL. New insights into the role of neuron-specific enolase in neuro-inflammation, neurodegeneration, and neuroprotection [Internet]. U.S. National Library of Medicine; 2018 [cited 2023 Jun 14]. Available from: <https://www.ncbi.nlm.nih.gov/pmc/articles/PMC5836052/>
2. Tian Z, Liang C, Zhang Z, Wen H, Feng H, Ma Q, et al. Prognostic value of neuron-specific enolase for small cell lung cancer: A systematic review and meta-analysis [Internet]. U.S. National Library of Medicine; 2020 [cited 2023 Jun 14]. Available from: <https://www.ncbi.nlm.nih.gov/pmc/articles/PMC7261386/>

TekEquipment

Equipment for a safer, cleaner & more efficient laboratory.

Down-Draft GrossPath GP Workstations

- Integrated active carbon air recirculation filter (+ HEPA option)
- No ducted ventilation system needed
- Height adjustable
- Simple installation
- Full range of accessories
- Widths available: 125cm, 150cm, 175cm, 200cm
- Cirdan PathLite Digital Camera system & PC option



Cut Grinder Diamond Pathology Saws

- Water cooling of blade eliminates aerosol material
- Safe to touch diamond coated cutting band
- Quick tensioning & variable speed band
- Perfect cut surface
- Full stainless steel construction
- 22 or 31cm cutting height models available



ErgoTek

Ask us about our specially designed ergonomic benchtop!

With 50cm of height adjustment, a 400kg capacity, a range of colour options available & rock solid stability with microtome use in mind, it's a must have for your laboratory.

Oscillating Autopsy Saws

- Variable speed oscillation & gradual start up to protect mechanical components
- Easy to clean & simple to change saw blades
- Slim ergonomic construction designed for long periods of use
- Quick charging battery powered options available



Ventilated Tissue Storage Cabinets

- Ducted or integrated fan & filter
- Stainless steel or glass doors
- Stainless steel or coated laminate construction
- Height adjustable shelving
- Roll out trolley option



Contact Us today to learn more!

1300 368 138 | tekequipment.com.au | info@tekequipment.com.au



FS 521104

Pyramid Innovation's Smart Printer Range



Scan & Print with ease

Track & Trace your lab workflow in real time



*Twin Hopper
Slide Printer*



*Six Hopper
Cassette Printer*



Print
standard
slides,
IHC adhesion,
specials like ThinPrep
or control slides
in the same print job
in the right order!

Pedigree

Built by the team that invented the industry standard Microwriters.

Performance

Fast - 4 second thermal labelling for cassettes & microscope slides.

Future-proof

Not 'just a printer' - Full Track & Trace suite to digitise your workflow with lifetime warranty options available.

Thin & LEAN

Perfect for labs starved of bench space.

Touchscreen

Quality of life features at your fingertips.

Tracking

Complete chain of custody handling. Rapidly search and report on your lab in real time - live as you work.

Scanner

Scans all forms of barcodes including 2D, linear and QR code.

LIS / On Demand

Compatible with all LIS / LIMS as well as offering true 'On Demand' LEAN.

Stellar Service

Included preventative maintenance & lifetime product support with additional training, customisation and live support when you and your staff need it. Find out why our clients love us.

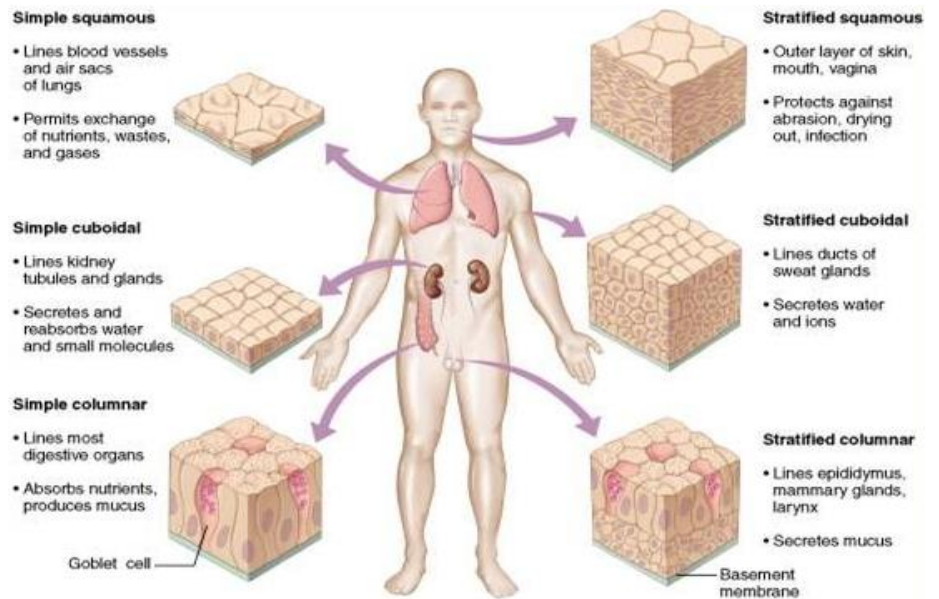
Scan to
find out more &
arrange a demonstration



THE BARRIER FUNCTIONS OF EPITHELIAL TISSUES

Epithelial tissues, one of the four main types of tissues in the human body (the others being connective, muscle and nervous), play a pivotal role in maintaining the integrity and functionality of various organs. These versatile tissues act as barriers, creating physical, chemical, and immunological shields that protect internal environments and regulate the exchange of substances between different body compartments.

Epithelial tissues can be found lining the outer surfaces, inner cavities, and organ systems. Their primary function is to create a protective barrier between the external and internal environments. However, this function is more sophisticated than just a simple 'wall', below we will briefly visit the key barrier functions of epithelial tissues and reiterate how they relate to preserving our health.



Physical Barrier:

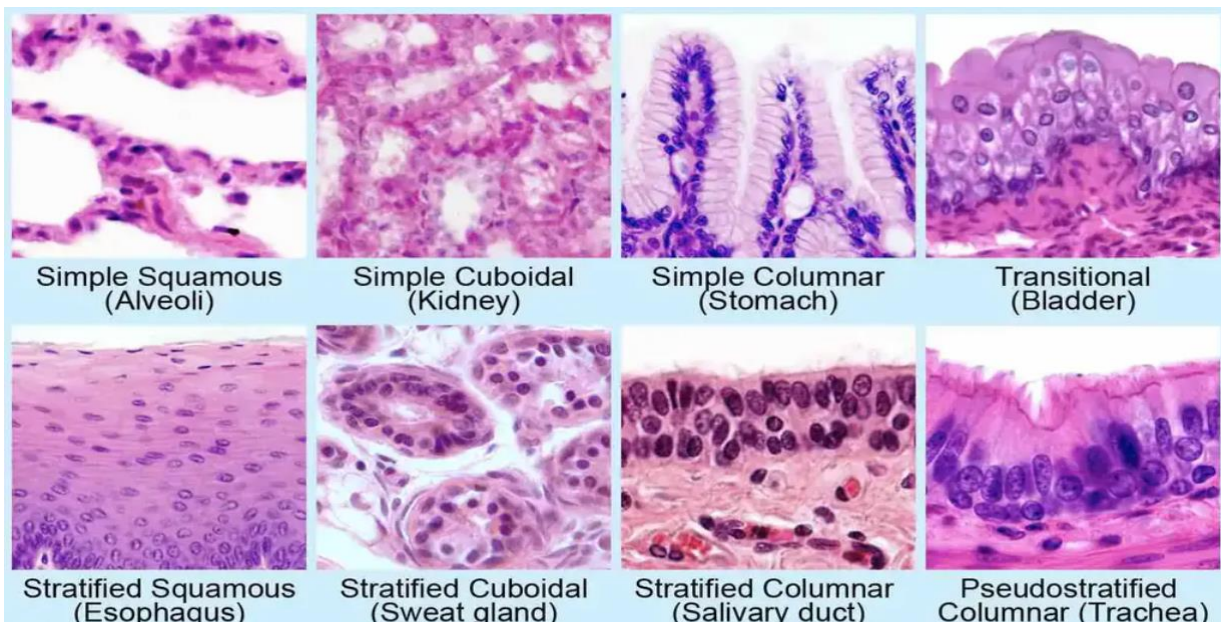
Epithelial cells are tightly packed, forming continuous sheets that physically separate different body compartments. This serves to prevent the entry of harmful microorganisms, toxins, and foreign particles. The best of example of this is our skin that shields the body from pathogens as well as preventing excessive fluid loss.

Selective Permeability:

Epithelial tissues can allow the controlled passage of substances across their layers. This regulation ensures that essential nutrients are absorbed while preventing the entry of harmful or unnecessary molecules. Epithelial cells achieve this through specialized structures like tight junctions, adherens junctions, and desmosomes that seal the gaps between adjacent cells. The intestinal epithelium is a prime example, selectively absorbing nutrients from the digestive tract while preventing the entry of potentially harmful substances.

Chemical Barrier:

Mucus, enzymes, and other chemical substances can be excreted by epithelial tissues facilitating chemical barrier function. Mucus, produced by goblet cells, lines the respiratory, gastrointestinal, and reproductive tracts, trapping pathogens and foreign particles, thereby preventing their entry. Epithelial cells can also release antimicrobial peptides and enzymes that actively destroy pathogens and maintain a healthy microbial balance.



Immunological Barrier:

The immunological role of epithelial tissues cannot be understated, serving as the first line of defense against pathogens. They contain specialized immune cells, such as intraepithelial lymphocytes, dendritic cells, and mast cells, which detect and initiate immune responses against invading pathogens. Additionally, epithelial cells themselves can release cytokines and chemokines to recruit immune cells, further enhancing the immune defense.

Disruptions or dysfunction of epithelial barrier functions can lead to various diseases. For example, a compromised intestinal epithelial barrier can result in increased permeability, allowing the entry of harmful substances, leading to inflammation and intestinal disorders like inflammatory bowel disease. We would also all be familiar with the infection that can easily occur with scrapes and cuts to the skin where the barrier for entry is removed and made easier for potential pathogens.

Epithelial tissues are essential components of our body's defense system, providing physical, chemical, and immunological barriers to protect internal environments from external threats. Their roles in maintaining selective permeability, generating mucus, and orchestrating immune responses highlight the importance of these tissues in safeguarding our overall health. By studying and understanding the intricate functions of epithelial tissues, we can gain insights into disease mechanisms and develop targeted interventions for improved healthcare.

Third Edition



Precision Oncology Summit 2023

Available On-Demand

Designed for researchers, clinician-scientists, pathologists, industry professionals, and interested individuals, the summit offers the latest market trends and updates in the developing field of precision oncology.

Over 900 participants have benefited from this series of educational summits. Don't pass up this exciting chance to learn!

Available on-demand from 1 June to 30 June 2023.



PR 7001-0906

© Agilent Technologies, Inc. 2023



Agilent
Dako

The ONE Leading Assay with KEYTRUDA®

Available for Triple-Negative Breast Cancer (TNBC) in Australia

Used in the KEYNOTE-355 clinical trial, PD-L1 IHC 22C3 pharmDx (SK006) is the companion diagnostic test that can help identify TNBC patients for treatment with KEYTRUDA (pembrolizumab). When confidence in a PD-L1 test is critical, the ONE you choose is crucial.

Pursue lab excellence with the leading PD-L1 assay for KEYTRUDA.



THIS PRODUCT IS NOT AVAILABLE FOR PURCHASE BY THE GENERAL PUBLIC.

KEYTRUDA is a registered trademark of Merck Sharp & Dohme Corp., a subsidiary of Merck & Co., Inc., Rahway, NJ, USA. Review the PD-L1 IHC 22C3 pharmDx Instructions for Use for more information regarding the KEYNOTE clinical trials

D75941 _01

© Agilent Technologies, Inc. 2023





The Perfect Match

MacroPATH & LOOX

The new Milestone **MacroPATH** boasts a 20.1 megapixel camera and assures improved productivity and workflow for the grossing room.

Quality of images is optimized and the software is user friendly and icon-driven for easy operation.

In addition to stand-alone operation, the MacroPATH can interface to your LIS. No more hand drawing and long descriptions!

**NEW
CAMERA**
20.1 Mega Pixels
30x Optical Zoom

The Perfect Match: **MacroPATH** + **LOOX**

EYE-CONTROL FOR MACROPATH

LOOX
EYE-CONTROL FOR MACROPATH

LOOX Eye-Control is the Milestone solution engineered for enhancing comfort while carrying out **hands-free gross specimen** documentation during pathological dissection.

The perfect combination **LOOX + MacroPATH** facilitates pathologists in display, manipulation and analysis of the grossing step; allowing them to take pictures and record audio and video, with the most intuitive and efficient visual control.



Distributed by Abacus dx - Contact Mick for a quote

Mick van Werkhoven

Territory Manager- VIC & TAS

0499 400 601 | m.vanwerkhoven@abacusdx.com | www.abacusdx.com

abacus dx



Hello Histo group! The HGVT is interested in promoting Histology into the public eye more (to show off of course!) and want to see pictures from our community to develop an Instagram (or Histo-gram, for the pun-minded). Above is some artistic inspo of the already incredible potential our discipline offers, however, anything related to Histology, your lab or your team is more than welcome!

Send all pictures to: editor@hgvt.org.au

Best regards!

Links to above art:

<https://www.nsh.org/blogs/christine-carreira/2021/03/26/art-of-the-stain-2021-contest-winner>

<https://www.pinterest.com.au/pin/20055160831353005/>

<https://illnessnarratives.files.wordpress.com/2014/01/i-will-wear-my-heart-upon-my-sleeve.jpg>

<https://www.pinterest.com.au/pin/395331673514803840/>

Dynamic Duo

Dual hoppers. Singular solution.



SlideMate™ AS

On-Demand Microscope Slide Printer

- Enhance Lean Workflow: compact footprint to fit next to a microtome
- Integrated color touch screen
- Intuitive interface, and easily adjustable print optimization settings for different slide types

SlideMate™ Pro

Thermal Transfer Microscope Slide Printer

- Efficient performance: dual-hopper design with intelligent slide selection
- High throughput: 4-5 seconds per slide
- Simple integration: Windows based driver and Gateway functions



POWERED BY

SHANDON

MICROM

MENZEL-GLÄSER

Richard-Allan Scientific



Slides from Epredia

Clean printing | Clear results

SlideMate™ and Superfrost microscope slides

Validated for use with
Epredia SlideMate Pro and SlideMate AS



Bio-Strategy PTY Limited

T 1800 00 84 53 | sales.au@bio-strategy.com

www.bio-strategy.com | shop.bio-strategy.com



bio-strategy
delivering technology



Future Events: 2023

Org. No. A0035235F

Date: 29th June, 2023

HGVT Scientific Meeting

Topics and speakers: Prostate Cut Up with Kelly Vukovic
Big Blocks and PIN 4 staining with Alastair Townsend

Venue: Peter Mac (Level 7) (Recorded virtually via Zoom)

Date: 4th August, 2023

HGVT Trivia Night

Venue: To Be Confirmed

Date: 15th September, 2023

HGVT Scientific Meeting

Venue: Peter Mac (Level 7) (Recorded virtually via Zoom)