

HGVT

Org. No. A003523F

PARAFFINALIA NEWSLETTER

VOLUME 28, NUMBER 4

December 2024

The HGVT aims to provide a dynamic continuing education program in which all persons with an interest in Histology and Histotechnology are freely invited to participate.

CONTENTS:

President Address: **Behind the Bench with Samantha Arandelovic**

Histo Christmas Poem

Under the Microscope **with Nicola Pinolo**

Days of our Labs

In the News

Scientific Meeting Review- **National Society of Histotechnology**

Conference- **by Kerrie Scott-Dowell**

RCPAQAP IHC Review **by Charlene Sano and Weiwen Ngo**

Future Events 2025

Committee Page



The members of the Histology Group of Victoria and Tasmania 2025 are:

Name	Institution
Samantha Arandelovic	Mater Hospital Brisbane
Kerrie Scott-Dowell	Dorevitch Pathology/ Leica Biosystems
Mark Bromley	Sullivan Nicolaides Pathology
Kellie Vukovic	Melbourne Pathology
Alistair Townsend	Royal Hobart Hospital
Christine Gorrige	Royal Hobart Hospital
Elizabeth Baranyai	Cabrini Health
Bronwyn Christiansen	Royal Children's Hospital
Snejana Ursache	Alfred Hospital
Gulnur Orman	Box Hill Hospital
Dodie Pouniotis	RMIT University
Fatema Tajbhai	Northern Health
Kerrie Howard	Northern Health/ RMIT University
Li Shan Ong	Monash Pathology/ Melbourne Pathology
Maria Boyer	Monash Pathology
Nicola Pinolo	Royal Melbourne Hospital

Contact us at www.hgvt.org.au

Membership enquiries: membership@hgvt.org.au

General enquiries: secretary@hgvt.org.au

Sponsorship/Advertising enquiries: trade@hgvt.org.au

Newsletter enquiries: editor@hgvt.org.au

Advertising for the next edition of Paraffinalia closes: 24th Feb 2025

Paraffinalia Rates :

A4 Electronically Submitted \$300 (no GST)
(Will be colour for e-newsletter and B&W for hard copy)

Flat Rate Per page colour

Used Equipment FREE
50 words – no logos/no pictures

Positions Vacant
No Logo up to 75 words FREE
A4 with logo \$200 (no GST)

Electronic Rates:

Positions Vacant-FREE email to
membership

-FREE list on
Website

Articles & Reports:

Author enquiries and readers wishing to contribute articles or reports can contact the Editor - editor@hgvt.org.au

Please email articles (preferably Microsoft Word format) for inclusion in the next edition to editor@hgvt.org.au

All items submitted for publication will then become the sole property of the Histology Group of Victoria Inc.

Disclaimer:

Any opinions expressed in this publication are solely those of the contributing author and are not necessarily reflective of the Histology Group of Victoria Incorporated or the editor.

NOTE: No responsibility is assumed by the Histology Group of Victoria Incorporated for any injury and/or damage to persons or property as a matter of products liability, negligence or otherwise, or from any use or operation of any methods, products, instructions or ideas contained in the material herein. It is the user's responsibility to ensure that all procedures are carried out according to appropriate Health and Safety requirements.

Copyright of this newsletter "Paraffinalia" is held by the Histology Group of Victoria Incorporated. No material may be reproduced in part or in whole without written consent from the copyright holders. All rights reserved.

President's Address

Behind the Bench with Samantha Arandelovic



As we approach the end of another year, I want to take a moment to reflect on the incredible accomplishments and milestones achieved by HGVT and National Histology Group in 2024.

Five great attended scientific meetings and so far, best attended Trivia Night. National Histology Conference in Sydney was a resounding success, with record attendance and thought-provoking presentations

While we celebrate our achievements, we are also setting ambitious goals for the coming year. Expect exciting updates on HGVT website, Facebook, Instagram or email. Your feedback and ideas will remain central as we plan for the future.

I am deeply grateful to our committee members, speakers, trade and every member who has contributed their time and expertise to make this year unforgettable. Your efforts ensure that the Histology Group remains a vibrant, supportive, and forward-thinking community.

As we close the chapter on 2024, let us carry the lessons, friendships, and successes of this year into the next. Wishing you all a joyful holiday season and a prosperous New Year.

Warm regards,
Samantha Arandelovic
HGVT President



MILESTONE
HELPING
PATIENTS



UltraGROSS

The new benchmark in grossing

- Discover next generation grossing
- You dreamt it, we built it

ENHANCED USER SAFETY

Sliding safety shield, backdraft and downdraft ventilation.
Bio-decontamination system to disinfect all the surfaces.



TAILOR-MADE MODULARITY

UltraGROSS counts on stainless-steel AISI 316 modules to be placed across the large basin, to match any working set-up, even with two-operators.



MACRO DIGITAL DOCUMENTATION

Built-in MacroPATH system for documenting the dissection procedure and creating image-enhance reports.



SMART USER INTERFACE

8" touchscreen terminal with all functions at reach. Capability to upload external files, like AAPA guidelines and training videos.



OPTIMAL ERGONOMICS

Adjustable working height.
Mobility through sturdy industry casters.
Compliance to anthropometric requirements (EN ISO 14738).



Scan QR code to learn more and request a quote



Distributed by Abacus dx - Contact Edward for a quote
Edward Tomlinson Smith

Business Development Specialist - VIC / TAS / SA

0488 0101 918 | e.tomlinson@abacusdx.com | www.abacusdx.com

abacus dx
a partner you can count on



ECLIPSE Ui

DIGITAL IMAGING MICROSCOPE

A Real Solution for Digital Pathology

LIVE ON-SCREEN OBSERVATION

Nikon's new ECLIPSE Ui Digital Upright Microscope provides accurate microscopy-based observation imaging. View and share high quality images in real time with easy-to-use software for a more streamlined workflow.

VIEW

Display high quality images in real time

FAST

Fast imaging for quicker workflow

USABILITY

User-friendly and simple for operational efficiency

NETWORK ACCESS

Digital medical system compatible with network for remote viewing and data sharing

EASY TO USE ON A DAILY BASIS

Functions to support multiple use cases and applications



ECLIPSE Ci-L Plus

Upright Clinical Microscope

Also available at Abacus dx



BOOK A DEMONSTRATION



Distributed by Abacus dx - Contact Edward for a quote
Edward Tomlinson Smith

Business Development Specialist - VIC / TAS / SA

0488 0101 918 | e.tomlinson@abacusdx.com | www.abacusdx.com





A huge congratulations to Sarah De Jong of the Royal Children's Hospital Anatomical Pathology lab on finishing her Anatomical Pathology AIMS Fellowship, a momentous achievement. Sarah is the 3rd woman at RCH to complete their Fellowships!

Congratulations to Lyna Evans of Royal Melbourne Hospital and family on the arrival of her sweet little boy.



Histology News, Births, Marriages, Retirements??? Any news!!!

We would love to hear from you!

Submit a pic and a short description to "Days of our labs" to the HGVT Facebook messenger or email editor@hgvt.org.au

**Histology Group of Victoria
Incorporated 1998**



SPOT IMAGING™
Take a closer look

1 Scan...
150
Barcodes!!

PATHTRACKER

PathTracker™

Bulk Barcode Reader

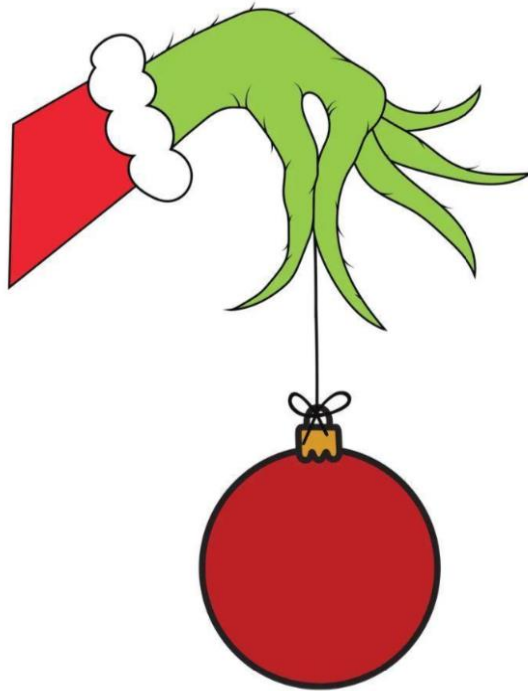


- Bulk Scanning of Slides and Cassettes
- Logs Barcodes into your LIS
- In-Process Sample Tracking
- Sample Archive Management
- Save Time and Eliminate Mistakes

VETO MEDICAL TECHNOLOGY

When you need to know
0400 289 318
sales @ vetomedtech.com.au

*December is here
Now let me be clear
That you've had but the entire year
To see your doctor about that tummy ache
Or that weird bit of skin that is starting to flake*

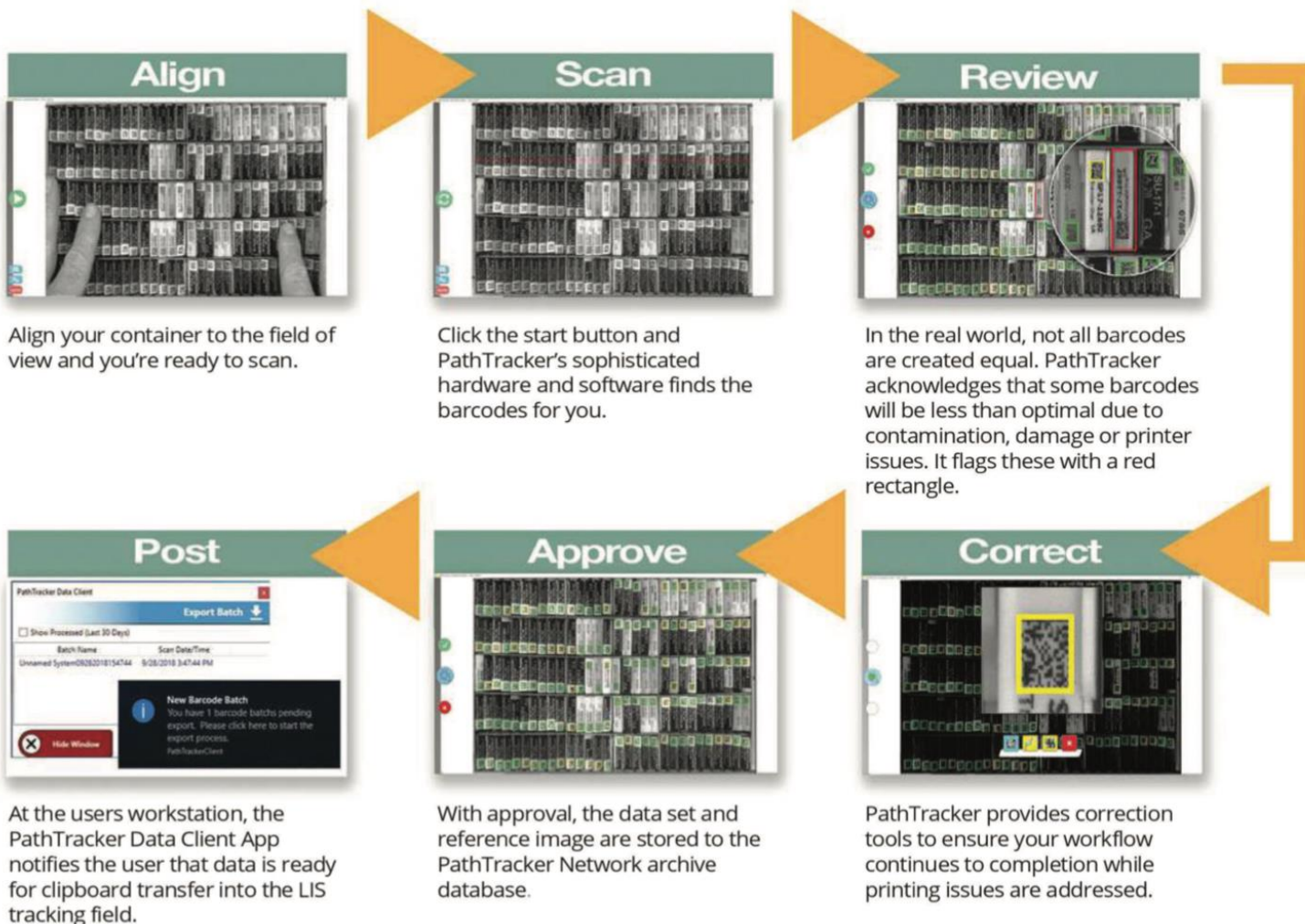


*The Block number is getting high
Yet we do not cry
Because Christmas in the lab
Is feeling pretty fab
With biopsies, resections and even a VAB
Oh yes its Christmas in the lab
We should buy a slab
And drink to another year in histology*

-E.M.

Basic Tracking Interface Module

The Basic Tracking Interface is our entry level (and first release) software. It provides a plug-in replacement for hand held scanners that are currently in use. This allows labs to quickly benefit from PathTracker's scanning speed and accuracy while the Advanced LIS Interface is implemented for your Lab.



Future Releases:

Advanced LIS Interface Software Module

PathTracker Advanced LIS Interface is an interactive interface that will interrogate the modality work list and flag samples that are missing or late to the next processing step, allowing users to head off problems in a timely fashion.

Archive Management Software Module

PathTracker Archive provides network based archive management interface for scanning and registering sample storage locations into the PathTracker database. As slides and cassettes are needed, PathTracker provides the location and will generate a request email to the responsible party. Once the sample is received, PathTracker will use its contact list to print labels and register who the sample was sent to. Additionally, PathTracker will generate a reminder email when the sample is due back to the loaning party. When the sample is returned, PathTracker eliminates your refilling fees by allowing the sample to be included in the next archiving run. PathTracker automatically records the new storage location and updates its records.

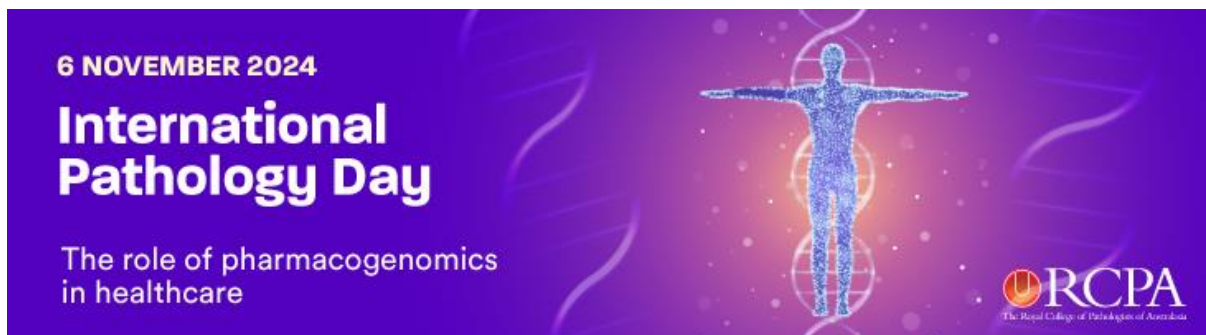


In the news



International Pathology Day was on 6th November; the RCPA spent 2024 International Pathology day discussing the role of Pharmacogenomics in Healthcare; the presentations can be seen here:

<https://www.rcpa.edu.au/Events/PathologyDay/International-Pathology-Day-2024>



The HGVT would like to celebrate and acknowledge all Pathologists, Medical Scientists and Pathology team members who help create the basis of up to 70% of clinical decisions

**Histology Group of Victoria
Incorporated 1998**

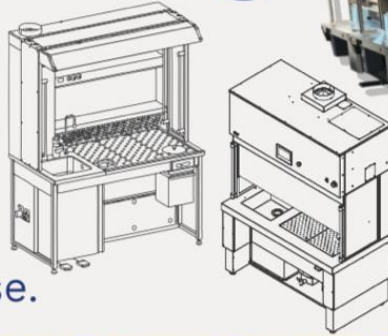


TekEquipment

Cutting Edge Histology Equipment

Cut-up & Grossing Stations

Our feature-rich workstations prioritise ergonomics and fume extraction above all else.



Formalin Management

Enhance staff safety and manage formalin directly at the source via our specialised auto-mixing and auto-neutralisation systems.



Ventilated Storage

Ducted and recirculating storage cabinets that are safe and secure for your labs chemicals and specimens.



Contact Us today!

1300 368 138
tekequipment.com.au
info@tekequipment.com.au

For more products, download our full Pathology catalogue:



Celebrating 25 years of supporting Australia's laboratories.

Under the Microscope with Nicola Pinolo



What was your first part time job?

I worked at a bakery from the ages of 15-21. I loved getting to take home a loaf of fresh bread at the end of every shift, and the pies were pretty great too.

What is your current Job?

Medical Scientist at The Royal Melbourne Hospital.

How long have you been working in your role?

It'll be coming up to 3 years soon, including my short Masters placement.

What skill do you want to learn and why?

I've recently taught myself to crochet thanks to Youtube tutorials. I love to work with my hands and create things (this explains how I ended up a Histology Scientist!). I'm currently crocheting some Christmas stockings and decorations for our Christmas tree.

If money was no object, what would you do all day?

I would honestly still work because I love the sense of achievement I get from producing good work and contributing to something important. But I would definitely reduce the hours and spend more time making crafts, reading, spending time with friends and family and travelling!

What's an ideal weekend for you?

I'm not one to sleep in much, so I'd be up and heading to pilates in the morning, making a trip to Preston Market, coming home and cooking up a storm. Catching up with friends or family over some great food and then winding down by reading a thriller novel before bed.

What's on your bucket list this year?

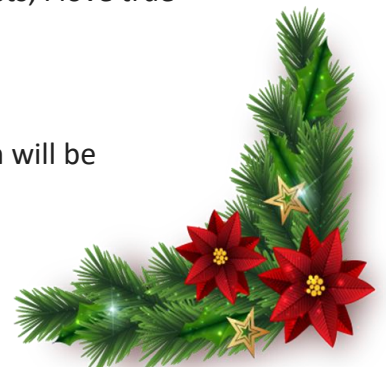
Buy a house in 2025!

What music/podcast is on your playlist at the moment?

I love a mix of Phoebe Bridgers, Arlo Parks, Chappell Roan. As for podcasts, I love true crime.

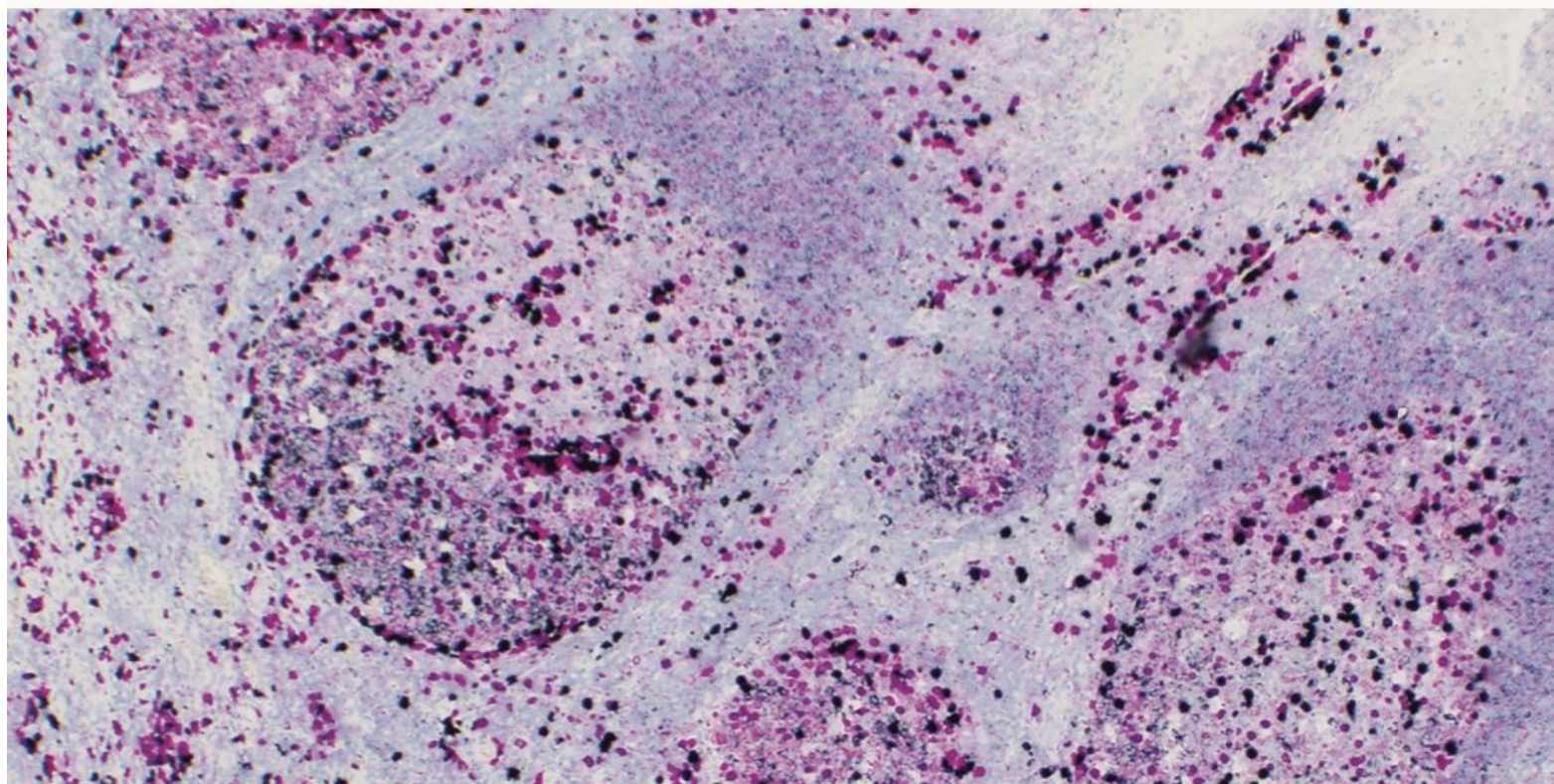
Where do you most want to travel, but have never been to?

Anywhere really, but in January I'm heading to Spain and Portugal which will be amazing!



VENTANA® Kappa and Lambda Dual ISH mRNA Probe Cocktail

Driving diagnostic certainty for life-changing decisions in haematopathology



Product name	Catalog number	Ordering code	Quantity
VENTANA Kappa and Lambda Dual ISH mRNA Probe Cocktail	800-6054	08507023001	30 tests
VENTANA Magenta ISH DIG Detection Kit	760-514	08507201001	60 tests
VENTANA Silver ISH BF Detection Kit	760-513	08507031001	60 tests

Scientific Meeting Review

By Kerrie Scott

National Society of Histotechnology

I was fortunate to attend the NSH convention, which is a huge event. There are many workshops, talks and keynote addresses to choose from over 4 days. It was an honour to be selected to speak as well. It also has a trade show with vast amounts of information to gather to improve the life of a histologist, the latest instrumentation, antibodies and consumables, as well as many companies that seek to get your name on their books as 'travelling histologists'.



Many of the talks I attended were targeted to the immunohistochemistry side of the field. I will share a couple with the HGVT.

There was a brilliant speaker called **Daniel N Cohen MD, PhD, FCAP, FASOP**. He spoke about the development of drugs for cancer treatments. What was fascinating was the timeline and obstacles faced to get potentially lifesaving drugs to patients. With only 1-2% of targeted drugs making it to human trials, the rejection of clinical studies when only 5% of patients responded to the use of next generation histopathology techniques to screen patients for trials to improve the response percentage in the hope of FDA approval. This process is a minimum of 10 years, so the drugs he is working on for small cell lung cancer, ovarian tumours and pancreatic tumours are still a while away.

Quite a lot of talks were on multiplexing and digital imaging. One talk that particularly stood out to me was by **Cindy L Lowe, BS, HTL (ASCP), QIHC** from Nashville, as it was not the standard dual staining or multiplexing I had seen where each antibody has a different chromogen. Cindy has developed a method of staining just with the Bond Red Kit, photographing it, destaining and restaining with a different antibody. This cyclic method works because each image is then photoshopped to a different colour, then layered using digital AI to produce an amazing image.

ULTRALINE™

Ready to Use Antibodies for Your Roche Instrument

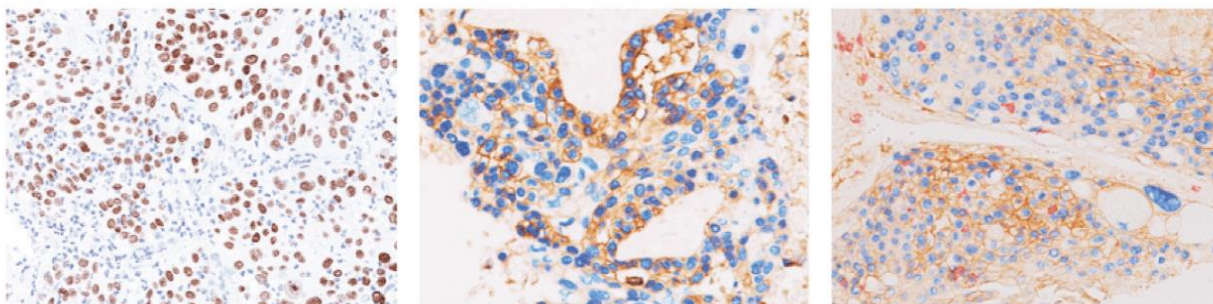
UltraLine™ Has Your Laboratory Covered

Are you looking for an extensive ready to use antibody library for your Roche or Ventana BenchMark automated platform? UltraLine Has Your Laboratory Covered.

Biocare UltraLine is a comprehensive antibody portfolio built specifically for your Roche/Ventana BenchMark XT or BenchMark Ultra Instrument. This powerful UltraLine of antibodies is in a convenient ready-to-use format and may be utilized in combination with the Optiview or UltraView Detection Systems*. If you're looking for an extensive menu of novel antibodies at the highest level of quality, the UltraLine is the perfection solution for you.

- ▶ Ready to Use for Roche Benchmark XT
- ▶ Ready to Use for Roche Benchmark Ultra
- ▶ Utilize OptiView or UltraView Detection
- ▶ Easy to Use Validated Protocols
- ▶ Extensive Ready to Use Antibody Library
- ▶ Unmatched Customer Service & Support

Optimized for Ventana® Benchmark® XT/ULTRA IHC - the range includes **p40 (M) [BC28]**:



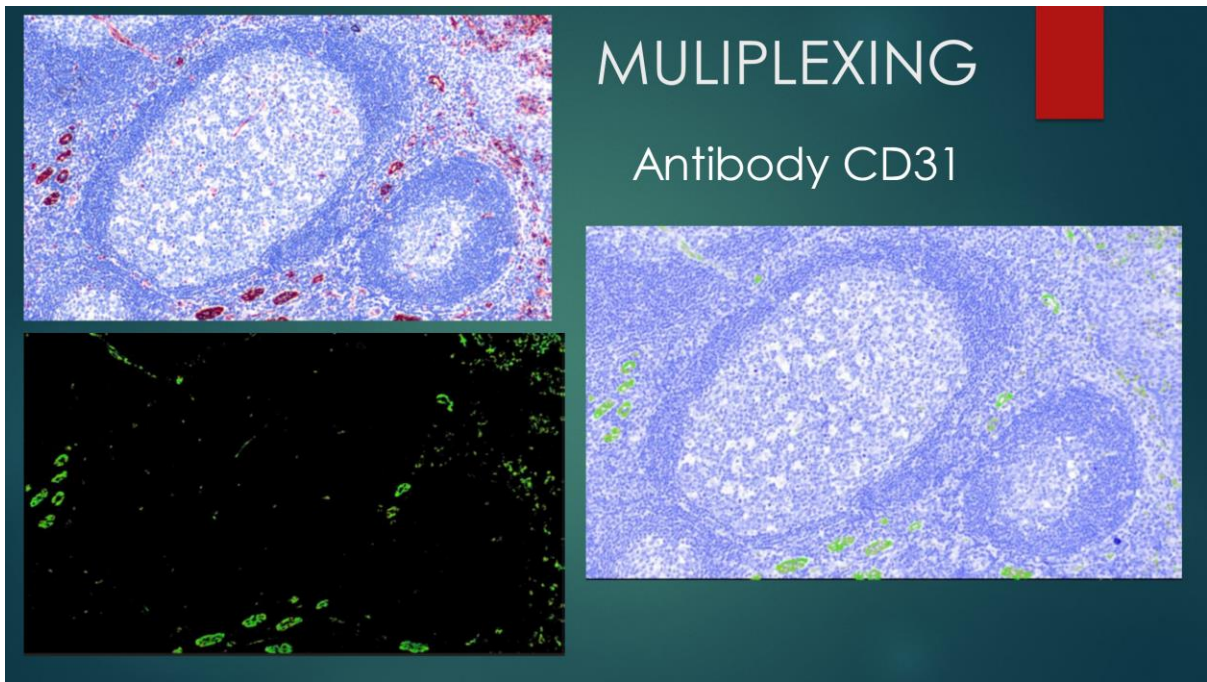


Figure 1 shows CD31 staining -top left image stained with the red kit on the Bond.right image changed colour using photoshop . Bottom left dark background also photoshop.

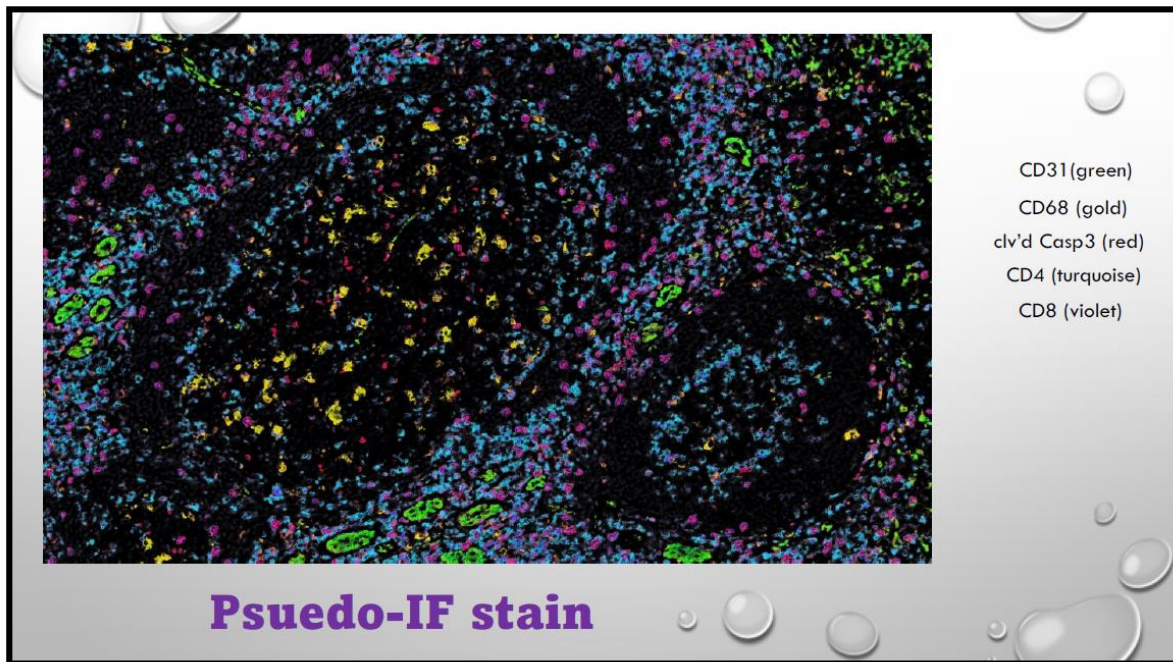


Figure 2 shows the final result using AI to overlay images.

On a personal note , my presentation was well received and I thoroughly enjoyed the opportunity to take part in the conference. I presented “Finding the Beauty in Tumours” and here are a couple of cases that I used:

Tonsillar Pillar Squamous Cell Carcinoma

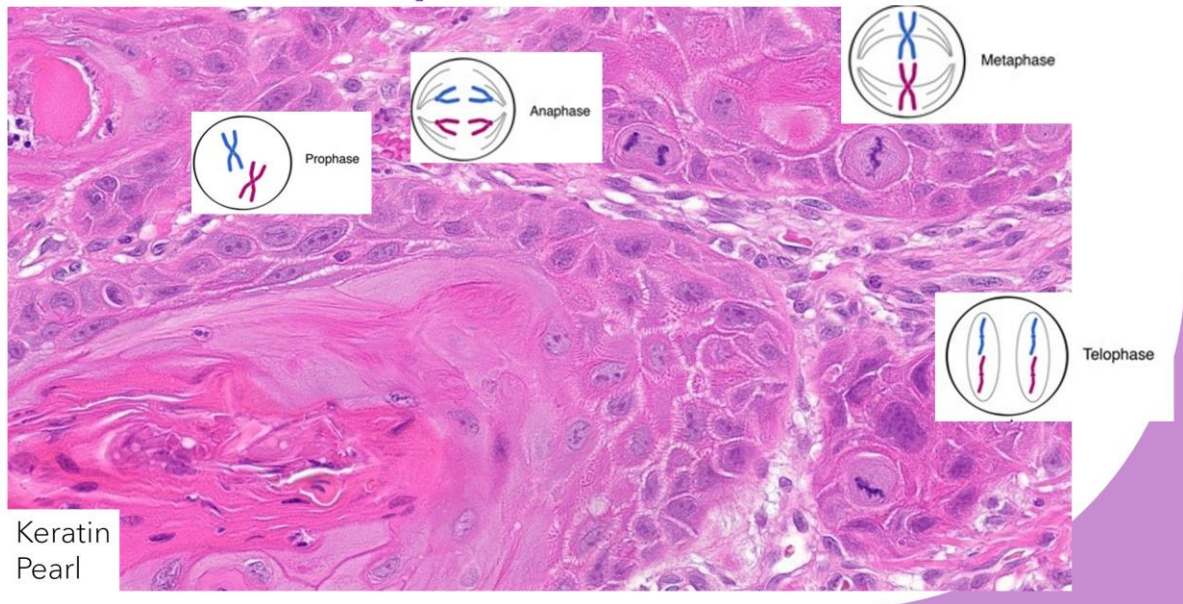


Figure 1 shows the SCC of the tonsillar region. I was impressed by the aggressive, dynamic nature of the tumour with all the mitotic figure

Urothelial Carcinoma of Bladder

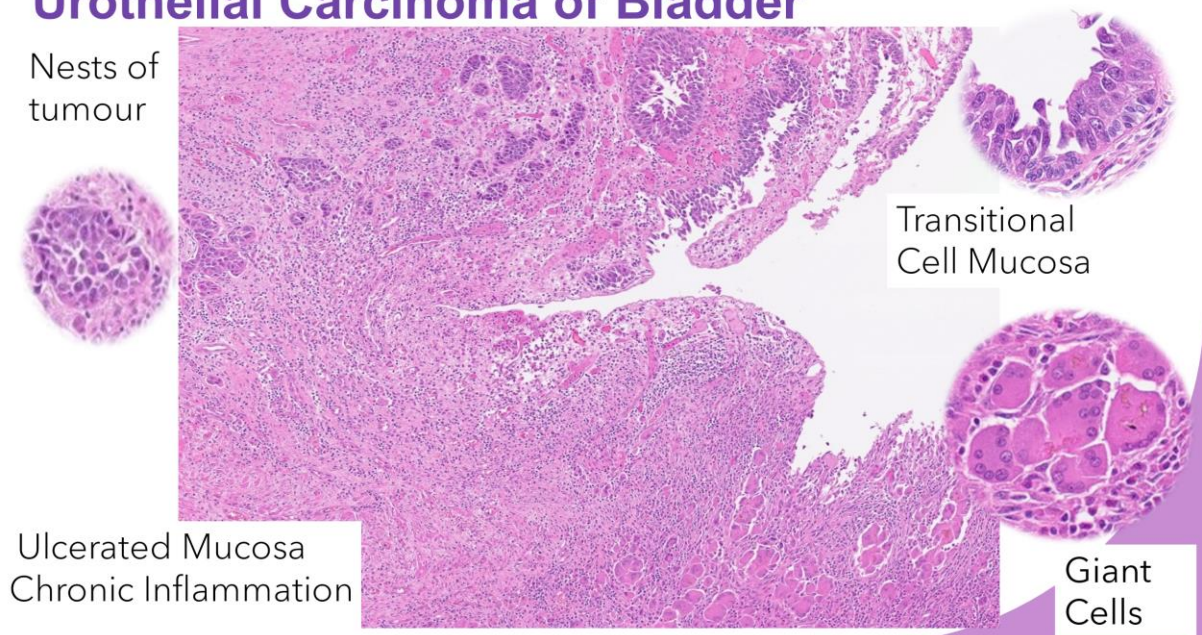
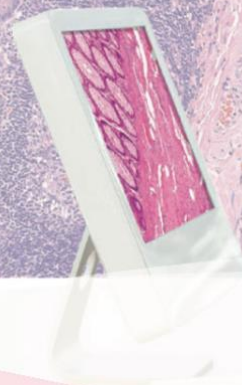


Figure 2 Shows not just the TCC but highlights the patient journey with chronic ulceration of the bladder mucosa and resulting giant cell response due to long standing catheterisation.

The take home message from my talk was to occasionally take the time to follow up a case and look under the microscope- You might be surprised at what you see.

Experience the future of digital pathology



Pannoramic 1000



When speed is your need. Free up your laboratory's resources with the new Pannoramic 1000 – the high-throughput whole-slide scanning solution.

- Largest-capacity, whole-slide scanner on the market: 1000 standard-width slides
- Can scan 15x15 mm slide area in 30 seconds (40x resolution, 0.25 µm/pixel, single layer)¹
- Touch-enabled, easy-to-use software interface
- Double-width slide capacity (optional)
- Flexible Priority/STAT slide position allocation

- Parallel operation: slide loading and preview in parallel with scanning
- Three individual objectives exchangeable automatically during scanning
- Multilayer (Z-stack) and Extended Focus scanning (optional)
- 1D and 2D barcode reading and parsing
- Automated tissue detection and coverslip detection

¹Actual scanning time dependent on slide quality, local server speed and other factors



- ☎ 1800 00 84 53 [Australia]
- ✉ sales.au@bio-strategy.com
- 🌐 www.bio-strategy.com





A huge congratulations to HGVT Life Member and Histology all rounder Kerrie Scott for her marvellous presentation on “Finding the Beauty in Tumours” At the National Society of Histotechnology Conference in New Orleans, LA this September

GET ON THE FAST LANE TO LAB EFFICIENCY



Discover cutting-edge insights, testimonials, and step-by-step guides on maximizing tissue processing efficiency, all in one place. Our new hub is your destination for valuable resources tailored to meet your lab's evolving needs.

**SCAN THE QR CODE
TO DIVE IN**



Leicabiosystems.com/dualretort

**Advancing Cancer Diagnostics
Improving Lives**

Leica

BIO SYSTEMS

RCPA QAP Introductory workshop in Diagnostic Immunohistochemistry.

The Importance of Immunohistochemistry training as a Histology Scientist
Charlene Sano and Weiwen Ngo, Monash Pathology

On the 7th - 8th November the RCPAQAP ran an Introductory workshop in Diagnostic Immunohistochemistry. Two scientists from the anatomical pathology department, Monash Pathology attended the workshop and below is feedback from their experience.

Diagnostic Precision: IHC is a critical tool for diagnosing various diseases, including cancers. Comprehensive training ensures that scientists can perform IHC techniques effectively to aid pathologists in accurate diagnosis of disease. Training also helps scientists understand how specific stains inform treatment decisions.

Proficiency: The transition from manual staining to automated methods requires a deep understanding of both the underlying principles and the operational techniques involved. Training programs equip participants with the necessary skills to handle both traditional and modern IHC methodologies.

Protocol Optimisation: The two-day workshop covers protocol optimisation and troubleshooting, which are essential for day-to-day operation. This knowledge minimises errors and improves the reliability of results. One of the highlights of the seminar was how speakers shared problems experienced within their laboratory and how they dealt with and liaised with others.

Antibody Selection and Validation: Learning about the selection of antibodies and the validation process is crucial. Training provides insights into which antibodies are appropriate for specific assays and the importance of validating these selections to ensure accuracy. It was also discussed how pathologists and scientists would often share inputs on how to improve staining and come up with ideas on how to maximise stains and tissues, just like dual stains.

Networking Opportunities: IHC training programs foster connections among professionals in the field. Building a network can lead to collaborative opportunities, shared knowledge, and support from peers and experienced mentors. Speakers even encouraged us to approach them during break to discuss issues and improvements.

By investing in IHC training, histology scientists can enhance their expertise, improve diagnostic outcomes, and ensure scientists stay updated with the latest updates in immunohistochemistry.



DREAMPATH

PROTECTING PATIENTS SAMPLE BY SAMPLE

Preprocessing traceability for all samples

- Compatible with ANY tissue processor basket
- Full connectivity with the LIS.
Connects with FINA/ARCOS for quality control reconciliation of all samples
- Customizable reporting and business intelligence tools, including processors, protocols and timings to ensure thorough documentation
- Eliminate risk of errors and sample loss
- Less than 30 seconds scanning per basket
- House your data locally or at your laboratory servers

Fully automated sample traceability and archiving

TRACEABILITY

- Know where your samples are at all times.
- Who has request them & why.
- When should you expect them back.
- Eliminate errors and stress.

PRODUCTIVITY

- Significantly reduce your resources involved in archiving, sorting and sample search.
- Increase the capacity of your lab.
- Better use of your resources towards more value-added tasks.

SPEED

- Accelerate access to your samples.
- Accelerate your processes.
- Reduce stress due to sample loss or misplacements.

CONNECTIVITY

- Benefit from a simple & robust connectivity suite.
- Connect multiple rooms, multiple sites or labs.
- Connect to your LIS via webservice, csv, HL7.

FAST, SECURE, SAFE AND CONNECTED



Future Events 2025

Org. No. A0035235F

Scientific Meeting / February 27th.

Title: Muscle and Nerve Biopsies

Presenters: TBA

Scientific Meeting / May 1st

Title: TBA

Presenters: TBA

Scientific Meeting / June 19th

Title: TBA

Presenters: TBA

TRIVIA NIGHT / End July/Start August

Title: TBA

Presenters: TBA

Scientific Meeting / August 21st.

Title: TBA

Presenters: TBA

Tasmania Scientific Meeting and AGM / End October Hobart

Title: TBA

Presenters: TBA