

HGVT

Org. No. A003523F

PARAFFINALIA NEWSLETTER

VOLUME 28, NUMBER 4

The HGVT aims to provide a dynamic continuing education program in which all persons with an interest in Histology and Histotechnology are freely invited to participate.

CONTENTS:

President Address Behind the Bench with Sam Arandelovic
Days of our Labs
In The News
Under the Microscope with Anne Beaty
HGVT One Day Seminar Review by Joshua Vines
Next Meeting
Future Events 2025

Committee Page

The members of the Histology Group of Victoria and Tasmania 2026 are:

Name	Institution
Samantha Arandelovic	Mater Hospital Brisbane
Kerrie Scott-Dowell	Dorevitch Pathology/ Leica Biosystems
Mark Bromley	Sullivan Nicolaides Pathology
Kellie Vukovic	Melbourne Pathology
Christine Gorringer	Royal Hobart Hospital
Elizabeth Baranyai	Cabrini Health
Bronwyn Christiansen	Royal Children's Hospital
Snejana Ursache	Alfred Hospital
Dodie Pouniotis	RMIT University
Fatema Tajbhai	Northern Health
Kerrie Howard	Northern Health/ RMIT University
Maria Boyer	Monash Pathology
Sharleen Kumar	Peter MacCallum Cancer Centre
Julachai Yonterng	Dorevitch Pathology
Eddie Tomlinson Smith	Abacus Dx
Joshua Vines	Royal Hobart Hospital
Raman Kaur	Royal Melbourne Hospital
Aleya Lyons	Dorevitch Pathology
Stephanie Tsaketas-Chiu	Dorevitch Pathology

Contact us at www.hgvt.org.au Membership enquiries: membership@hgvt.org.au

General enquiries: secretary@hgvt.org.au

Sponsorship/Advertising enquiries: trade@hgvt.org.au

Newsletter enquiries: editor@hgvt.org.au

Advertising for the next edition of Paraffinalia closes: **28th of February**

Paraffinalia Rates:

A4 Electronically Submitted \$400 (no GST)
(Will be colour for e-newsletter and B&W for hard copy)

Flat Rate Per page colour
FREE

50 words – no logos/no pictures

Positions Vacant

No Logo up to 75 words FREE
A4 with logo \$200 (no GST)

Electronic Rates:

Positions Vacant-FREE email to membership
-FREE list on Used Equipment Website

Articles & Reports:

Author enquiries and readers wishing to contribute articles or reports can contact the Editor - editor@hgv.org.au

Please email articles (preferably Microsoft Word format) for inclusion in the next edition to editor@hgv.org.au

All items submitted for publication will then become the sole property of the Histology Group of Victoria Inc.

Disclaimer:

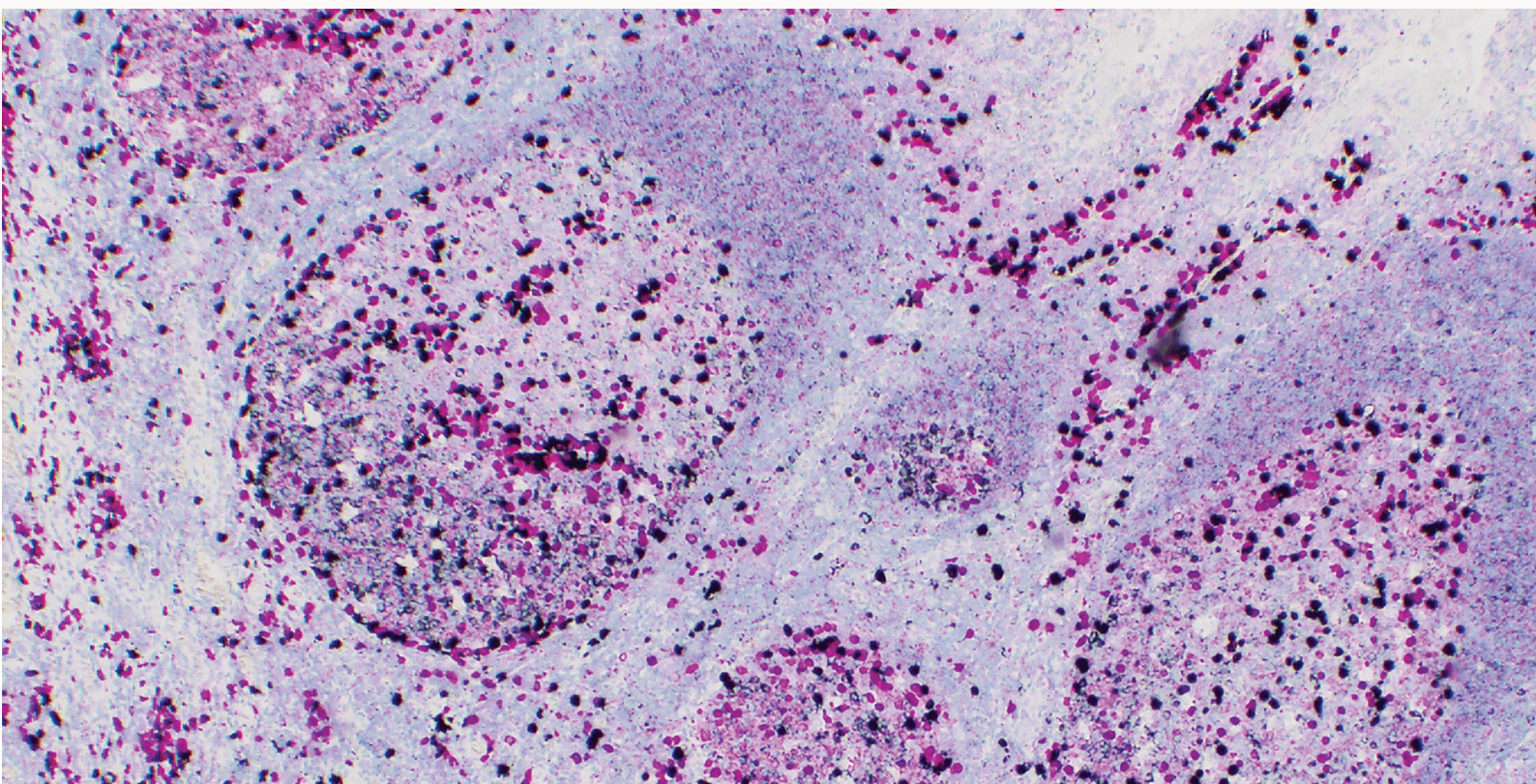
Any opinions expressed in this publication are solely those of the contributing author and are not necessarily reflective of the Histology Group of Victoria Incorporated or the editor.

NOTE: No responsibility is assumed by the Histology Group of Victoria Incorporated for any injury and/or damage to persons or property as a matter of products liability, negligence or otherwise, or from any use or operation of any methods, products, instructions or ideas contained in the material herein. It is the user's responsibility to ensure that all procedures are carried out according to appropriate Health and Safety requirements.

Copyright of this newsletter "Paraffinalia" is held by the Histology Group of Victoria Incorporated. No material may be reproduced in part or in whole without written consent from the copyright holders. All rights reserved.

VENTANA® Kappa and Lambda Dual ISH mRNA Probe Cocktail

Driving diagnostic certainty for life-changing decisions in haematopathology



Product name	Catalog number	Ordering code	Quantity
VENTANA Kappa and Lambda Dual ISH mRNA Probe Cocktail	800-6054	08507023001	30 tests
VENTANA Magenta ISH DIG Detection Kit	760-514	08507201001	60 tests
VENTANA Silver ISH BF Detection Kit	760-513	08507031001	60 tests

Presidents Address

Behind the Bench with Sam Arandelovic

As we wrap up another successful year, I am delighted to reflect on the incredible achievements of the Histology Group of Victoria and Tasmania throughout 2024–2025.

This year, we organized four scientific meetings, each delivering valuable insights and fostering collaboration within our community. A highlight was our one-day seminar in Hobart, Tasmania, which attracted nearly 100 delegates and featured six trade sponsors — a testament to the strength and reach of our network.

We also hosted our much-loved Trivia Night, drawing an impressive 220 attendees.

Congratulations once again to TissuPath, who claimed victory for the second year running! I would like to extend my heartfelt thanks to the outgoing committee for their dedication and hard work over the past year. Your efforts have been instrumental in our success. At the same time, I warmly welcome the new committee and look forward to working together to continue advancing our mission.

A special thank you goes to our trade partners for their ongoing support. Your contributions make these events possible and help us deliver exceptional experiences for our members.

Looking ahead, mark your calendars for the National Conference in Western Australia, scheduled for September 11–13, 2026. It promises to be an outstanding event, and we hope to see many of you there.

Finally, on behalf of the Histology Group of Victoria, I wish you all a Merry Christmas and a Happy New Year. May the festive season bring joy, rest, and inspiration for the year ahead.

Warm regards,
Samantha Arandelovic
HGVT President

MacroShot[™] Digital Imaging System

MacroShot[™] is a high-definition digital imaging system designed by CellPath, for capture of high-quality images, video, and audio notes.

The MacroShot[™] utilises a full HD camera with a powerful 30X optical magnification and wide view, which enables the camera to be fitted to any existing cut-up bench, grossing hood or used as a stand-alone system in mortuaries. It fully documents the grossing procedure, enabling laboratories to implement better quality assurance control, reduce specimen description time and reduce risk of errors within the lab.

The MacroShot[™] utilises user-friendly icon driven software. A novel auto-calibration procedure, coupled with a comprehensive suite of annotation and measurement tools, ensures accurate, reliable measurements at up to twenty user-defined zoom levels.

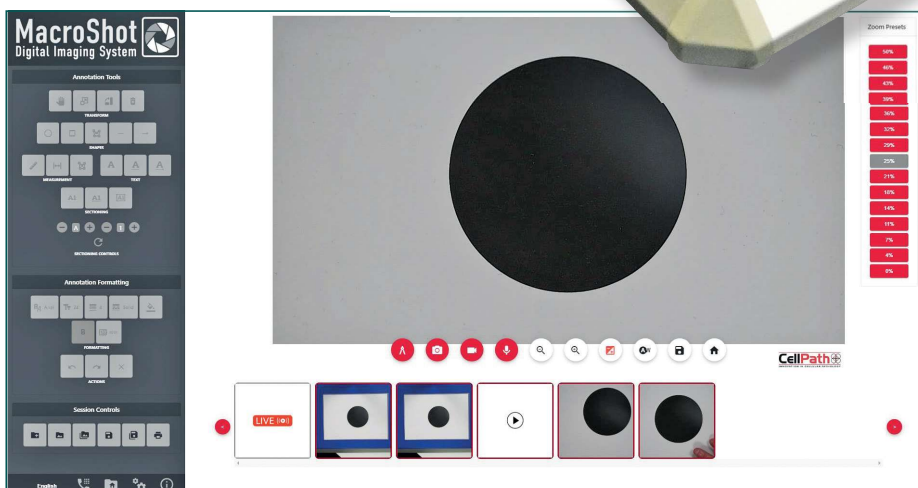
The MacroShot[™] software can be interfaced with a user's preferred online conference software, to allow remote second opinion telepathology consultations and guided cut-up by pathologists.

Optional accessories available for the MacroShot[™] include:
 a washable keyboard and mouse,
 a foot pedal system for hands free capture of images, as well as an LED light ring (with polarizer), which removes glare from wet specimens and ensures constant image quality.

**EASY
TO
USE**

KEY FEATURES

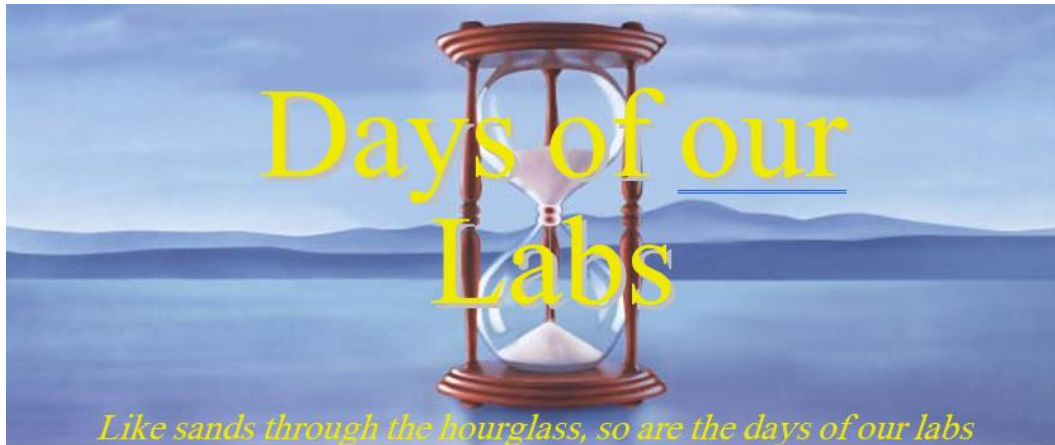
- High Quality HD Sony camera optics
- 30x optical magnification (zoom)
- 2.0 megapixel images
- Zoom levels user definable (up to max 20 zoom levels)
- Auto calibration feature
- Single push white balance
- Annotation and calibration features included in software (not an optional extra)
- Video (with sound)
- Digital dictation/voice notes
- Teleconferencing for remote consultations – second opinion/ guided cut-up by pathologist
- Optional table-top stand with blue cut up board for contrast
- Optional LED light ring with dimmer control and polarizer



User friendly icon driven software.

CellPath
 INNOVATION IN CELLULAR PATHOLOGY

Ask us for a demo today!



One Day Seminar - Hobart

A Dorevitch Christmas



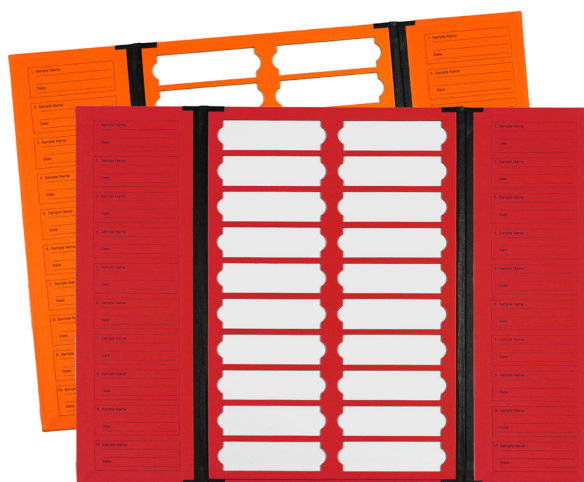


Trajan 20 Place Slide Folders

Now available in red and orange

Q: Are you looking for more variety in your slide folders?

A: Trajan 20 place slide folders are now available in red and orange.



You asked and we listened! Trajan's range of 20 place slide folders has now expanded to include red and orange.

Our 20 place folders are designed to withstand even the heaviest of workloads. Made from sturdy cardboard, the protective covers can be folded back without damaging the hinge. An index on the inside cover allows for easy identification of slides, and each place has a thumb slot for easy removal.

See below for the full range of colours.


Product code	Description
4800010	Slide Storage Tray/Folder 20 Place - Yellow
4800012	Slide Storage Tray/Folder 20 Place – Pink
4800013	Slide Storage Tray/Folder 20 Place – Green
4800014	Slide Storage Tray/Folder 20 Place – Blue
4800015	Slide Storage Tray/Folder 20 Place – Red
4800016	Slide Storage Tray/Folder 20 Place - Orange

Showing the right path

Histology News, Births, Marriages, Retirements??? Any news!!!
We would love to hear from you! Submit a pic and a short description to “Days of our labs”
to the HGVT Facebook messenger or email editor@hgvt.org.au



In the news




Peter MacCallum Cancer Centre
 59,219 followers
 3w • Edited •


TOOT TOOT! Exciting times with trains starting this Sunday, November 30, on the new Metro Tunnel.

Peter Mac nurses [Molly Robertson](#) and Katie O'Connor spoke to 7 News about how it will dramatically change how thousands of healthcare staff, patients and their families travel to and from the Parkville precinct – and Peter Mac – every day.

Trains will operate to a limited “Summer Start” schedule, running every 20 minutes from 10am to 3pm weekdays, longer on weekends, with a full service from Feb 1.

For timetables and further information, see <https://lnkd.in/g2CFSxn>.



 149

1 comment • 7 reposts

Like
 Comment
 Repost
 Send

The long-awaited Metro Tunnel is now open! The new tunnel passing through the city loop increases accessibility via 5 new stations making commutes for both the general public and healthcare workers more reliable.

Parkville Station is one of the 5 new stations along the Metro Tunnel which will service those who travel to the Parkville Precinct which is home to major institutions including The Royal Melbourne Hospital, The Royal Women's Hospital. The Royal Children's Hospital, WEHI and the Peter MacCallum Cancer Centre.

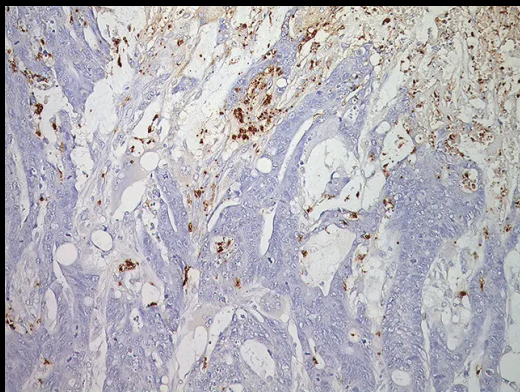
Check out this LinkedIn post here:

https://www.linkedin.com/posts/peter-maccallum-cancer-centre_toot-toot-exciting-times-with-trains-starting-activity-7400044425227329536-sUHF



BIOCARE
M E D I C A L

METAGENE

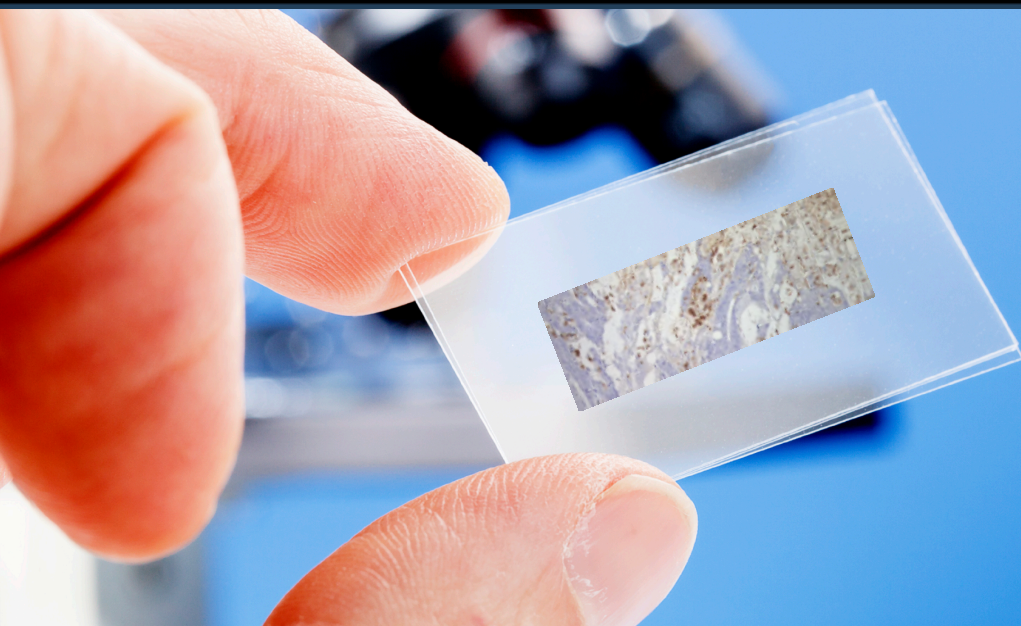


Myeloperoxidase

Rabbit Polyclonal

RTU 6mL, 25mL

The Myeloperoxidase antibody has been shown to be a specific marker for myeloid cells and has been used in a panel for immunophenotyping acute lymphoblastic leukemia in bone marrow biopsies. Myeloperoxidase (MPO) is readily detected in myeloblasts and immature myeloid cells of acute myelogenous leukemia, progranulocytic leukemia, progranulocytic leukemia, monomyelocytic leukemia, erythroleukemia, myeloblastomas and other hematopoietic disorders. Aberrant MPO expression has been found to occur in non-myeloid cells in some disease states, including lung and ovarian cancers.



Use the QR code to visit the Biocare Medical website for more information on Myeloperoxidase.



Contact us for more information or a quote.

www.metagene.com.au - 1800 788 498 - admin@metagene.com.au

Under the Microscope with Anne Beaty

What was your first part time job?

Hospital Cleaner – Bellbird Private Hospital – Blackburn.

What is your current Job?

Principal Scientist Anatomical Pathology – The Royal Melbourne Hospital

How long have you been working in your role?

9 years.

What skill do you want to learn and why?

A couple why stop at one!!!!

Language – Arabic – (Duolingo). Apparently, it's in the top 5 most difficult language to learn – Wanted a challenge!!

Activity - Learn how to surf – Long held dream – Love the beach.

Creativity - Create sculptures - I used to do this when I was very young on the family farm using left over objects.

If money was no object, what would you do all day?

Work on my fitness, work for a charity, finish the endless number of half completed craft projects and also start new ones, join a choir, indulge in the visual arts and spend time with family – Life is so short and time is a thief.

What's an ideal weekend for you?

Road trip to see music performance – Adelaide Festival - Opera (Annual event), Day on the Green, Red Hot Summer tour or Bluesfest – Anything that's going on. Jumping on a plane to attend Coachella and Glastonbury a long-held dream. Finally going to see Elton John again for the umpteenth time.

What's on your bucket list this year?

Travel to Europe – Visit Barcelona, Paris, Rome, Greece and Mykonos

What music/podcast is on your playlist at the moment?

Der Ring des Nibelungen Wagner, 10-1 Midnight Oil, Sigur Ros, Depeche Mode, Foo Fighters, Red Hot Chili Peppers, Pearl Jam, Kylie Minogue, Sunnyboys, The Smiths, New Order, Paul Kelly and Amyl and the Sniffers. Honestly, there are so many more on high rotation.

Where do you most want to travel, but have never been to?

South America



UltraGROSS

The benchmark in grossing



ENHANCED USER SAFETY

Sliding safety shield, backdraft and downdraft ventilation. Bio-decontamination system to disinfect all the surfaces.

MACRO DIGITAL DOCUMENTATION

Built-in MacroPATH system for documenting the dissection procedure and creating image-enhance reports.

TAILOR-MADE MODULARITY

UltraGROSS counts on stainless steel AISI 316 modules to be placed across the large basin, to match any working set-up, even with two-operators.

SMART USER INTERFACE

8" touchscreen terminal with all functions at reach. Capability to upload external files, like AAPA guidelines and training videos.

OPTIMAL ERGONOMICS

Adjustable working height. Mobility through sturdy industry casters. Compliance to anthropometric requirements (EN ISO 14738).



Scan QR code to learn more and request a quote

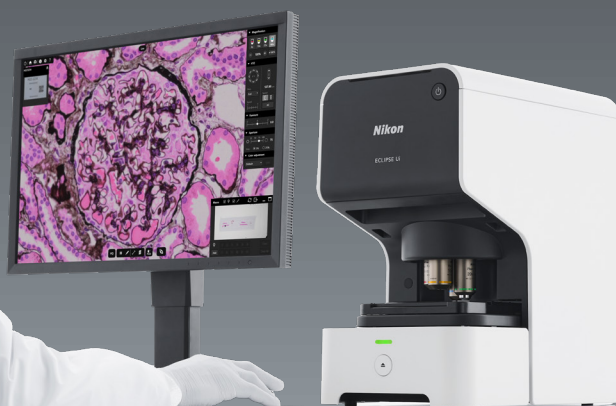


ECLIPSE Ui
DIGITAL IMAGING MICROSCOPE

A Real Solution for Digital Pathology
LIVE ON-SCREEN OBSERVATION

Nikon's ECLIPSE Ui Digital Upright Microscope provides accurate microscopy-based observation imaging. View and share high-quality images in real-time with easy-to-use software for a more streamlined workflow.

Pathologists can experience a significant boost in efficiency with the Nikon ECLIPSE Ui microscope, and dedicate more time to critical analysis rather than manual adjustments.



Scan QR code to learn more and request a quote

DISCLAIMER:

The Nikon ECLIPSE Ui microscope is designed to operate with a strong and reliable internet connection.



Distributed by Abacus dx - Contact Edward for a quote
Edward Tomlinson Smith

Business Development Specialist - VIC / TAS / SA
0488 010 918 | e.tomlinson@abacusdx.com | www.abacusdx.com

HGVT One Day Seminar Review by Joshua Vines

HGVT delivered a full and dynamic program at the 2025 One Day Seminar. A huge thank you goes to Alistair Townsend and Christine Gorringer, who thoughtfully assembled the program, secured a grand and central venue, and organised a fantastic lineup of speakers.

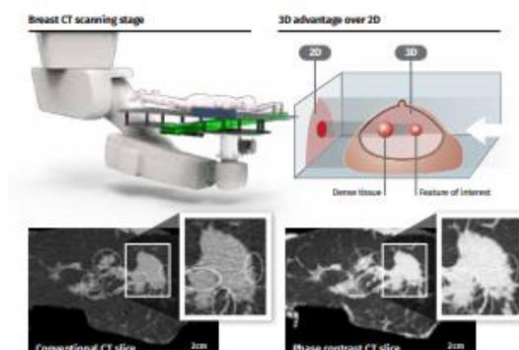
This year's event was particularly special for me, as it was the first conference I had ever attended and I quickly learned I wasn't alone, with many other first-time participants sharing the same mix of excitement and curiosity. We were incredibly lucky to have a conference of this calibre hosted right here in our own backyard of Hobart, making it wonderfully accessible for local attendees.

It also seemed that our interstate visitors thoroughly enjoyed the opportunity for a scenic getaway or at least, I certainly hope they appreciated the chance to escape for a couple of days. With that shared sense of enthusiasm in the room, we settled in eagerly as the first session of the day began.

DR ASHKAN PAKZARD

THE SYNCHROTRON: IMPACT PROJECT

Dr Pakzard commenced the conference with a detailed overview of the IMPACT Project at the Australian Synchrotron. He explained how this research initiative aims to significantly reduce radiation exposure during breast imaging while also minimising trauma to breast tissue. A key part of this work involves the application of Phase Contrast Tomography (PCT), which offers enhanced soft-tissue contrast and the potential for earlier, more accurate detection of breast cancer. Dr Pakzard also described how alternative table positioning methods can improve image clarity by reducing artefact, ultimately producing more reliable diagnostic outcomes. His presentation provided an exciting glimpse into how synchrotron-based imaging may reshape future breast screening practices.



JESSIE LEE

INSIDE A HISTOTECHNOLOGY RESEARCH FACILITY

Jessie Lee then introduced attendees to the work undertaken within the WEHI Advanced Histotechnology Laboratory. She outlined how the facility provides highly specialised histological testing on both animal and human tissue, directly supporting a wide range of research projects. Jessie emphasised that the histotechnologists within the laboratory must constantly adapt their methodologies to suit the specific tissue they receive, taking into account how each type responds to particular staining procedures. She highlighted how this flexibility, combined with a high level of technical skill, enables researchers to obtain reliable, high-quality results that can meaningfully advance scientific understanding.

DR HELEN HARRIS

PLACENTAL CUT UP

Dr Helen Harris presented an in-depth discussion of the newly released RCPA guidelines relating to placental dissection and reporting. She explained how recent changes to the Medicare billing scheme have resulted in amended complexity categories and a clearer differentiation of placentas based on gestational age, as well as whether the case involves a live birth or a fetal death in utero. Dr Harris walked through key principles for approaching placental cut-up in a way that allows both maternal and fetal pathology to be demonstrated effectively. Her session offered valuable clarity for laboratories seeking to align their practice with the new recommendations.

REMY MAHONEY

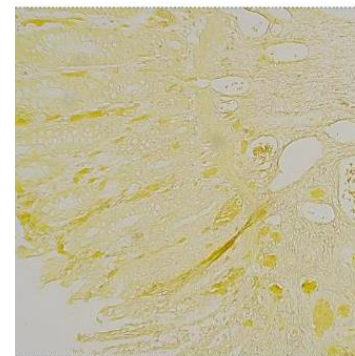
CLND18

Remy Mahoney delivered a focused presentation on CLDN18 (Claudin-18), a newly introduced immunohistochemical marker now being utilised in the assessment of gastric and gastro-oesophageal cancers. She explained the marker's growing clinical importance, particularly in guiding treatment options for patients who are HER2 negative. Remy discussed the role of CLDN18 expression in determining suitability for therapy with Zolbetuximab (Vyloy) and outlined practical considerations for laboratory set-up, optimisation, and interpretation. The session highlighted how changes in targeted therapy are shaping new expectations for diagnostic testing.

LUCY ORCHARD

SPECIAL STAINS — AN ORIGIN STORY

Lucy Orchard presented a captivating historical exploration of early staining reagents used in microscopy and histology. She discussed the origins and early applications of classic dyes such as saffron, carmine, and madder, explaining how these natural pigments were first extracted, developed, and applied in staining protocols. Lucy described how these early discoveries laid the groundwork for the specialised synthetic stains used in modern laboratories, illustrating the lineage between early scientific curiosity and the complex dyes now essential to diagnostic practice.



Saffron stain recreation (ileum)

DR PATRICK CANDY

CASE STUDIES ON ABNORMAL GASTRIC MALIGNANCIES

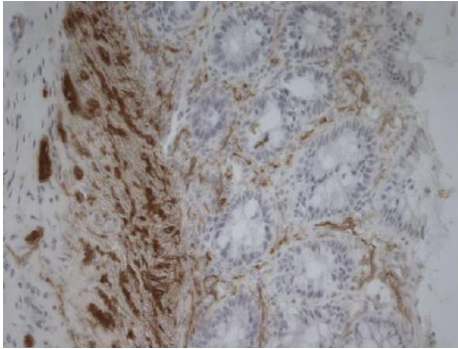
Dr Patrick Candy shared two complex and educational case studies focusing on abnormal gastric malignancies.

The first involved a 35-year-old male who presented with a one-year history of rectal bleeding. The patient had a past medical history of autism spectrum disorder and macrocephaly. Subsequent investigations led to a diagnosis of Cowden's syndrome, a rare genetic condition with characteristic gastrointestinal manifestations.

The second case centred on a 40-year-old female who had been experiencing long-standing episodes of sharp right iliac fossa pain. With no significant medical history or obvious risk factors, the eventual diagnosis of a duplication cyst illustrated the importance of considering uncommon pathologies in persistent, unexplained abdominal cases.

BRON CHRISTIANSEN

HIRSCHSPRUNG DISEASE



Bron Christiansen followed with a technical presentation on diagnostic approaches to Hirschsprung disease. She explained the use of acetylcholinesterase (AChE) direct colouring techniques, highlighting how these can support rapid confirmation of the condition. Bron also described the use of Toluidine Blue staining on frozen sections to verify adequate resection margins during surgery. Her presentation provided a practical overview of how these staining techniques can be used effectively in both routine and intraoperative settings.

MARIA FLYNN

INTRA-ABDOMINAL DESMOPLASTIC SMALL ROUND CELL TUMOUR — CASE STUDY

Maria Flynn presented a detailed case study involving a 15-year-old female who presented with a pelvic mass and ascites, ultimately undergoing an omenectomy and salpingo-oophorectomy. Maria described how the diagnosis of intra-abdominal desmoplastic small round cell tumour was confirmed through a combination of immunohistochemistry and molecular testing. She discussed the key histological features, the challenges associated with diagnosing such a rare tumour type, and the importance of integrating multiple diagnostic modalities to reach an accurate result.

DODIE POUNIOTIS

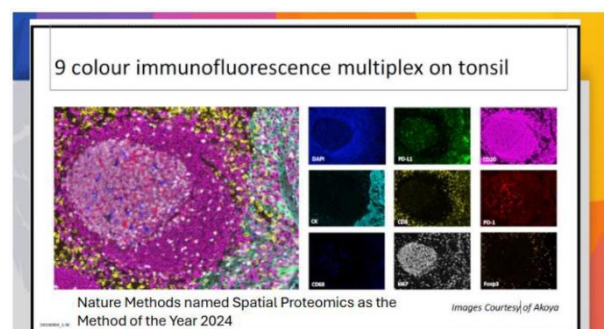
FROM THEORY TO TISSUE: APPLIED LEARNING IN DIAGNOSTIC IHC

Dodie Pouniotis delivered an engaging session on the RMIT Advanced Histopathology project, which is designed to strengthen students' understanding of immunohistochemistry through applied learning. She explained how the program guides students from manual IHC techniques through to critical interpretation, using a structured model for analysis and problem-solving. Dodie highlighted how this educational approach helps students build confidence in troubleshooting, optimising stains, and applying theoretical concepts to real diagnostic scenarios.

KERRIE SCOTT

NHS UPDATE

Kerrie Scott provided an update on the recent NHS conference held in Long Beach, where artificial intelligence took centre stage across multiple sessions. She described emerging technologies that focus on multiplexing, digital slide enhancement, and AI-based colour standardisation. These developments aim to improve consistency, reproducibility, and diagnostic accuracy across laboratories, reflecting the expanding role of digital pathology and computational tools in the field.



GET ON THE FAST LANE TO LAB EFFICIENCY



Discover cutting-edge insights, testimonials, and step-by-step guides on maximizing tissue processing efficiency, all in one place. Our new hub is your destination for valuable resources tailored to meet your lab's evolving needs.

**SCAN THE QR CODE
TO DIVE IN**



Leicabiosystems.com/dualretort

**Advancing Cancer Diagnostics
Improving Lives**

Leica
BIO SYSTEMS



Org. No. A0035235F

Future Events 2026

Scientific Meeting | 19th February

Title: HER2-low Breast Cancer

Presenters: Dr. Cameron Snell & Kenna Pham

Scientific Meeting | 23rd April

Title: TBA

Presenters: TBA

Scientific Meeting | 11th June

Title: TBA

Presenters: TBA

Trivia Night | End July/Start August

Location: TBA

National Histology Conference | 11-13th September

Location: Perth

Scientific Meeting | 8th October

Title: TBA

Presenters: TBA