



Histology Group of Victoria Inc.

Org. No. A003523F  
ABN 49 725 623 468

<http://www.hgv.org.au>

Twitter: @HGV\_Histology

Facebook: <http://www.facebook.com/groups/6832145876/>

# PARAFFINALIA

**Volume 18 Number 2**

**April, 2013**

## **Contents:**

- Blurb from the Bush
- February Scientific Meeting Review
- Under the Microscope with Alan Gooley
- National Conference 2013  
Information and Registration
- Trivia Night
- Future Events 2013

---

*Editor: Elizabeth Baranyai*

*“The HGV aims to provide a dynamic continuing education program in which all persons with an interest in Histology and Histotechnology are freely invited to participate.”*

# Committee Page

The members of the Histology Group of Victoria 2013 are:

Committee Members	Name	Institution	Phone
President	Adrian Warmington	St. John of God Pathology (Victoria)	5320 1171
Treasurer	Judy Brincat	Melbourne Pathology	9287 7785
Editor Paraffinalia	Elizabeth Baranyai	Cabrini Malvern	9508 1263
Trade representative	Kristy De George	Austin Pathology	9496 5792
Web Master	Sean Phefley		0407314440
Social Secretary	Rebecca Forrester	Peter MacCallum Cancer Centre	9656 1431
Social Secretary	Kellie Vukovic	Peter MacCallum Cancer Centre	9656 1431
Meeting Co-ordinator	Nguyen Nguyen	Peter MacCallum Cancer Centre	9656 1431
	Mark Bromley	Melbourne Pathology	9287 7806
	Rosemary Savino	Monash Medical Centre	9594 3494
	Jane Furness	Melbourne Pathology	9287 7785
	Alison Boyd	St. Vincent's Hospital	9288 4288

Please feel free to contact any of the committee members listed above with any comments or suggestions. Contributions are always welcome.

## Advertising:

All enquiries for trade advertising in the next edition, please contact: Kristy De George - [trade@hgv.org.au](mailto:trade@hgv.org.au)

Advertising for the next edition of Paraffinalia closes: **1<sup>st</sup> June, 2013**

### Paraffinalia Rates:

**A4 Electronically Submitted \$275 (inc GST)**  
(Will be colour for e-newsletter and B&W for hard copy)  
**Flat Rate Per page colour**

**Used Equipment FREE**  
**50 words – no logos/no pictures**

**Positions Vacant**  
**No Logo up to 75 words FREE**  
**A4 with logo \$165 (inc GST)**

### Electronic Rates:

**Positions Vacant-FREE email to membership**

**-FREE list on Website**

### Articles & Reports:

Author enquiries and readers wishing to contribute articles or reports can contact the Editor - [editor@hgv.org.au](mailto:editor@hgv.org.au)

Please email articles (preferably Microsoft Word format) for inclusion in the next edition to [editor@hgv.org.au](mailto:editor@hgv.org.au)  
All items submitted for publication will then become the sole property of the Histology Group of Victoria Inc.

### Disclaimer:

Any opinions expressed in this publication are solely those of the contributing author and are not necessarily reflective of the Histology Group of Victoria Incorporated or the editor.

**NOTE:** No responsibility is assumed by the Histology Group of Victoria Incorporated for any injury and/or damage to persons or property as a matter of products liability, negligence or otherwise, or from any use or operation of any methods, products, instructions or ideas contained in the material herein. It is the users responsibility to ensure that all procedures are carried out according to appropriate Health and Safety requirements.

Copyright of this newsletter "Paraffinalia" is held by the Histology Group of Victoria Incorporated. No material may be reproduced in part or in whole without written consent from the copyright holders. All rights reserved.

# BLURB FROM THE BUSH

---

It is upon us. The National Meeting is this month. Registrations started slowly, but have now picked up and we all look forward particularly the committee that has put in some hard yards, to April 26<sup>th</sup>. If you have not yet registered there is still time, both for the conference and the workshops. The social gala evening on Saturday proudly sponsored by our Platinum sponsor DAKO Australia, still has seats available and is always a great night. If you or a partner are looking for some suggestions outside of the scientific components, various options exist. For more information on all things conference visit [www.nationalhistologyconference.com.au](http://www.nationalhistologyconference.com.au) or contact Nikki at InFront at [nikki@infront.com.au](mailto:nikki@infront.com.au)

Given our involvement with the national meeting, there will be no further scientific meetings until November however this has not stopped our annual trivia night. Maria Chavez has handed the reins to Rebecca Forrester and Kellie Vukovic who have been immersed in venue and host arrangement. Last year was very popular thus a larger venue to cater for all those trivia buffs, or just Histologists who don't give two hoots about trivia but like a drink or two, has been organised. Further details are contained within.

Look forward to seeing everyone at the conference!

Adrian Warmington  
HGV President

# Archiving solutions for your storage needs

## Thermo Scientific Metal Block & Slide Storage

### Blockstore Cabinet

The Blockstore Cabinet has eight drawers and accepts embedding rings, processing cassettes and unmounted blocks up to 12 x 25 x 30mm. Each drawer has dividers producing seven rows 30mm wide. This cabinet is available in three colours, Blue, Green and two-tone Grey.

Item Code	Dimensions	Weight (empty)	Capacity
ASHE43/22BLUE	480 x 480 x 275mm	17.5kg	3000
ASHE43/22GREEN	480 x 480 x 275mm	17.5kg	3000
ASHE43/22GREY	480 x 480 x 275mm	17.5kg	3000

**\$359**



### 14-Drawer Slide Filing Cabinet

The 14-Drawer Cabinet is designed for the storage of 76 x 26mm microscope slides. The slides are stored vertically and if not dry, can still be filed using a Spring Spacer (Thermo Part Number ASHE43/16) to separate them. This cabinet is available in three colours, Blue, Green and two-tone Grey.

Item Code	Dimensions	Weight (empty)	Capacity
ASHE43/12BLUE	480 x 480 x 140mm	11kg	6000
ASHE43/12GREEN	480 x 480 x 140mm	11kg	6000
ASHE43/12GREY	480 x 480 x 140mm	11kg	6000

**\$259**



Prices valid until 30th June 2013. Prices exclude GST. Pricing shown is correct at the time of printing.

**ThermoFisher**  
S C I E N T I F I C

For customer service, call 1300-735-292  
To fax an order, use 1800-067-639  
Visit us online: [www.thermofisher.com.au](http://www.thermofisher.com.au)

©2013 Thermo Fisher Scientific Inc. All rights reserved. A.B.N. 52 058 390 917

136912125-01-RM

# DPX new

## A less hazardous mounting medium.

DPX is a well established water-free mounting medium for the mounting of permanent slides after histology staining. Merck announces *DPX new* which does not contain the teratogenic ingredient Dibutyl phthalate (DBP). Not only is *DPX new* suitable in combination with all conventional staining applications, but it is less hazardous and more eco and user-friendly.

### DPX new

- Less hazardous formulation
- Colour stability of samples is guaranteed for at least 10 years
- Suitable for both manual mounting and automated mounting systems
- Suitable for all conventional stainings
- Compatible with existing Merck Millipore products
- Developed along regulatory requirements to ISO 13485
- IVD and CE-certified

### Ordering information:

Description	Product Code	Pack Size	Price (Excl. GST)
<i>DPX new</i> Non-aqueous mounting medium for microscopy.	1005790500	500 mL	\$67.20

For more information contact Merck Millipore:

Ph: 1800 335 571  
 Fax: 1300 360 418  
 email: [orders.aus@merckgroup.com](mailto:orders.aus@merckgroup.com)  
[www.merckmillipore.com](http://www.merckmillipore.com)



# Combined HGV/ASC Scientific Meeting-Student Presentations—Review by Nguyen Nguyen

## The Double Edged Sword

By: Cris Rabaja

Peter MacCallum Cancer Centre

It is a case study of a 52 year old male that has been experiencing severe headaches for the past few months. He was brought into emergency after a seizure at home and appeared to have suffered a stroke. Emergency surgery was performed to stop haemorrhaging of the brain. The patient had a history of skin cancer lesions that were removed two years prior.

Brain tissue was taken at surgery and sent to pathology for a diagnosis.

Was the seizure caused by:

1. Haemorrhage or Related Cardiovascular Accident?
2. Transient Ischaemic Episode?
3. Space Occupying Lesion - Benign or Malignant Mass?
4. Metastatic Tumour?

The H&E showed that there was brown to black pigment present.

Is this an:

1. Artefactual pigment - Formalin Pigment?
2. Non-Haematogenous - Melanin Pigment, Lipofuscins?

There are a few methods to identify the type of pigment present as the standard H&E is insufficient.

1. Formalin Removal
2. Schmorl's Reduction Stain
3. Masson-Fontana Stain
4. Melanin Bleaching

Melanin is an excellent protectant. This is because it can efficiently absorb detrimental UV-radiation and transforms the energy into harmless heat. It is a derivative of Tyrosine and can be found in:

- Skin, Eyes, Brain and Zona Reticularis

Melanin pigment is a Non-haematogenous pigment. It is also a ubiquitous and naturally occurring pigment that is produced by a process known as melanogenesis.

Melanogenesis occurs in melanocytes which are melanin-producing cells predominantly located in the stratum basale of the skin's epidermis. Melanogenesis leads to a long-lasting pigmentation.

When a malignant tumour forms in the melanocytes, it is referred to as melanoma. It is due to an overexposure of UV rays and melanoma has a tendency to grow quickly.

Immunohistochemically, the typical melanoma is reactive for:

- S-100 protein; HMB-45; Melan-A and Tyrosinase

After these confirmatory stains, the diagnosis is most likely to be a **Cerebral Melanoma Metastasis**.

CNS metastases occur in 10 to 40% of melanoma patients in clinical studies and up to 90% in autopsy studies. In 15% to 20% of these patients, the CNS is the first site of relapse. Malignant melanoma represents the third most common cause for central nervous system metastases after breast and lung cancer.

## Case Study #32

By: Sundus Raza

Royal Melbourne Hospital

It is a case study of a 20 year old patient that had a sudden death. Prior to his death, he had symptoms of shortness of breath, weight loss and had felt weak.

At autopsy, a section of bone was taken for pathology. Examination of the H&E showed lack of adipocytes and osteocytes. There was the presence of inflammation, excessive fibrosis, necrotic bone, haemorrhage and congested blood vessels.

The preliminary diagnosis based on the H&E was osteomyelitis (due to the presence of inflammation, excessive fibrosis and necrotic tissue).

A gram stain was performed and this showed that there was a gram positive cocci present in the bone tissue.

The final diagnosis was '**Chronic Osteomyelitis**'. There was excessive fibrosis due to bone damage, ischemia, wide spread inflammation, areas of necrotic bone (empty lacuni no osteocytes seen) and the presence of gram positive bacteria (most likely *Staphylococcus aureus*).

### What is Osteomyelitis?

It is an infection of bone.

- Two types:
  - > **Acute Osteomyelitis**
    - Usually seen in children
  - > **Chronic Osteomyelitis**
    - Can develop from recurrent infections
    - Or may not involve an acute phase
      - Usually seen in Tuberculous Osteomyelitis
- Causes:
  - > **Pyogenic Bacteria**
    - Most commonly *Staphylococcus aureus*
      - 70-80% of cases
    - Some may have multiple bacteria causing infection
  - > **Mycobacterium (Tuberculosis)**
    - Rare
    - Tuberculous Osteomyelitis
  - > **Syphilis**
    - Rare

### Treatment and Prognosis:

- Antibiotics and pain medication
- Surgery
  - > To drain pus (abcess) and improve healing
  - > To remove dead tissue/ debris that may delay healing
  - > May need to remove bone if infection is severe
- Usually good prognosis if detected early
- Late detection may lead severe bone damage and damage surrounding tissues



## **Dedicated to Servicing and Supporting Histology Laboratories**

It's nearly 30 years since Grale Scientific started providing support and services to Histologists in Australia. Today Grale remains Australian owned and has become one of the largest providers of pathology consumables and services.

We specialise in

- **Providing the full range of histology consumables**
- **Equipment Service**, *we service and support a wide range of microscopes, histology and general laboratory equipment*
- **Sourcing Difficult Products**, *ask us for help, we'll make every effort to find it for you*
- **Cost Effective Supply**, *ask about our FREE INTO STORE consumables supply plans*
- **Providing Personal and Knowledgeable Service**, *the team at Grale is growing!*

Contact Grale for all your histology consumable and service needs.

**Grale Scientific (03)9874 8577**

**[www.grale.com.au](http://www.grale.com.au)**



## Join the conversation.

Our commitment to advancing pathology and improving cancer diagnostics begins with something very simple - listening. At Dako, we define our priorities by listening to the world's most reliable experts. You.

Better productivity? Same-day results for IHC and ISH? A more efficient workflow? We would like to know what your priorities are.

Dako is proud to be the Platinum sponsor of the National Histology Conference in Melbourne on April 26-28, 2013. Come join the conversation and find out what's new at Dako.

Relentless in our commitment to fighting cancer. **Together.**

[www.dako.com](http://www.dako.com)

An Agilent Technologies Company

# Under the Microscope with Alan Gooley -Reported by Kellie Vucovic & Rebecca Forrester

---

## **Anatomical Pathology**

### **Grade 3 Scientist**

### **Alfred Hospital**

#### **1. What was your first job?**

Trainee haematologist at the old Peter Mac in Little Lonsdale Street. No better place to start my career but only lasted a year in haem before being transferred to histo (Thank Goodness!).

#### **2. How long have you worked in histology?**

TOO LONG! When I started New Zealand hadn't been discovered.

#### **3. When people ask, "So, what do you do?" How do you explain Histology?**

A glorious blending of butcher, chef and undertaker, only difference is it's illegal to eat what I produce.

#### **4. Who would you most like to have dinner with and why?**

If it has to be someone famous, then I'd say it'd be Marcel Marceau. He can mime 'till the cows come home but as long as he keeps his gob shut it means I can eat in peace.

#### **5. What is your all-time favourite movie?**

Variable. Right now it's "Conspiracy", a film about the Wannsee Conference in 1942. Stars Kenneth Branagh as Reinhard Heydrich. Truly disturbing and chilling film about real monsters. Can be summed up as:

"Let's do lunch and we can have a nice chat about genocide with poison gas over canapés and schnapps". Sickening but fascinating.

#### **6. What is your favourite stain?**

Whichever's the easiest and with a guaranteed 100% success rate. At my age and only a few years from retirement I don't have to prove anything to anyone. Let you young 'uns do all the exotic stuff.

#### **7. What is your favourite food/Restaurant?**

Difficult question. I LOVE food and will eat anything EXCEPT cheese and rabbit food. That's probably why I've been pleasantly plump all my life. Diets be damned!

#### **8. What is the best conference you have ever attended?**

I'd say the 1997 NHS conference in Columbus, Ohio. Don't get me wrong, the place was a total bore and the conference was so-so, but I can say I've been there.

#### **9. Favourite beverage?**

No one favourite but I can tell you the one on the bottom of the list – Bailey's Irish Cream. Got piddled at my 21<sup>st</sup> on the stuff. Now all I have to do is just look at the bottle and I have this urge to ralph into the porcelain bowl.

#### **10. What is your dream holiday destination and why?**

China. Dream destination for photographers, great food and I can read the menus and road signs.

## HS Microscope Slides and Cover Glasses for Pathology, Histology & Cytology

HS Pure White Glass microscope slides have quickly replaced many name brands throughout the Australian market place. The smooth finish and unique safety corners of our chemically etched frosted slides together with the quality and price of both Slides and Cover Glasses will be sure to exceed your expectations.

"PURE WHITE GLASS Microscope Slides have now replaced the old Pathology Grade" - download the Pure White Glass brochure from our website : [www.hurstscientific.com.au](http://www.hurstscientific.com.au)  
 Check out our new prices and take advantage of the savings.

### PURE WHITE GLASS-ColourFrost Microscope Slides Replacing the Pathology grade

- Clear Glass, Pre-Cleaned
- Each Slide is printed with "HURST" to minimise any stickiness
- 45° have Clipped Corners, Cellophane Wrapped
- 25.0 (+0.5)mm x 75.0 (+0.5)mm, 1mm (+/- 0.05)mm thick,
- 50 pieces / pack (20 packs per carton)
- Colours Available: White, Orange, Yellow, Green, Pink, Blue, Tan & Purple



45° G/Edge	Price	90° G/Edge	Price	90° G/E with CC	Price
Code		Code		Code	
White WGCFA5W	\$4.50	WGCF90W	\$3.75	WGCF90CCW	\$3.95
Blue WGCFA5B	\$4.50	WGCF90B	\$3.75	WGCF90CCB	\$3.95
Yellow WGCFA5Y	\$4.50	WGCF90Y	\$3.75	WGCF90CCY	\$3.95
Green WGCFA5G	\$4.50	WGCF90G	\$3.75	WGCF90CCG	\$3.95
Pink WGCFA5P	\$4.50	WGCF90P	\$3.75	WGCF90CCP	\$3.95
Orange WGCFA5O	\$4.50	WGCF90O	\$3.75	WGCF90CCO	\$3.95
Tan WGCFA5T	\$4.50	WGCF90T	\$3.75	WGCF90CCT	\$3.95
Purple WGCFA5M	\$4.50	WGCF90M	\$3.75	WGCF90CCM	\$3.95

### Borosilicate Cover Glasses

- Clear Glass, Pre-Cleaned
- No. 1 Thickness (0.13-0.16mm)
- Hinged Lid Box
- 100/Pack (except 22x22 packed in 200's)
- 10 Packs/box



Code	Size	Price
CG12222	22X22mm	\$38.50/2000
CG12225	22X25mm	\$50.00/2000
CG12232	22x32mm	\$31.50/1000
CG12240	22x40mm	\$36.50/1000
CG12250	22x50mm	\$41.50/1000
CG12260	22x60mm	\$47.50/1000
CG12270	22x70mm	\$75.00/1000
CG12432	24x32mm	\$34.50/1000
CG12440	24x40mm	\$38.50/1000
CG12450	24x50mm	\$45.00/1000
CG12460	24x60mm	\$52.00/1000
CG12464	24x64mm	\$59.00/1000
Circular Cover Glasses		
CG110	10mm Dia.	\$30.00/1000
CG112	12mm Dia.	\$30.00/1000
CG113	13mm Dia.	\$30.00/1000



### OCT Embedding Compound

Embedding Medium for Frozen Tissue Specimens

4583001 OCT EMBEDDING COMPOUND CLEAR (40Z/BOTTLE)

1-11 bottles \$24.50ea 12+ bottles \$21.50ea

### STAIN REMOVER

206 Erada-Stain cream 6OZ (170gm/tube) \$25.00/Tube



207-16 Erado-Sol liquid (473ml/bottle) \$33.00/Bottle



### Positive charged and Adhesion Microscope Slides Manufactured from Pure White Glass

- 75x25mm, Thickness 1-1.2mm, 72 pieces/plastic pack (20 packs per carton)
- White 90° Ground Edge, Cellophane Wrapped
- Other colours available

	Code	Price	Pack Price/Ctn
Adhesive	SCF90W-AS	\$15.75/72	\$13.50/72
Positive Charged (HYDROPHOBIC)	SCF90W-PC	\$18.00/72	\$16.00/72
Positive Charged (HYDROPHILIC)	SCF90W-AHS	\$19.50/72	\$17.50/72

### Pathology Grade Microscope Slides

- Clear Glass, Pre-Cleaned
- 25.4x76.2mm (1"x3"), 1-1.2mm thick, 50 pieces / pack (50 packs per carton)
- Vacuum Foil Packed

	Code	Price
Plain, 90 Ground Edge	SPGE90	\$2.25/50
Double Frosted, Cut Edge	SDFCE90	\$2.00/50
Single Frosted, 45° Ground Edge,	SSFGE45	\$3.45/50
Double Frosted, 90° Ground Edge	SDFGE90	\$2.70/50
Double Frosted, 90° Ground Edge, Clipped Corners	SDFGE90CC	\$3.00/50

### SUPERIOR MARIENFELD Cover Glasses Suitable for Automatic Cover Slipping Machines

- Clear Glass, Pre-Cleaned
- No. 1 Thickness (0.13-0.16mm)
- Hinged Lid Box
- 10x100 packs/box



Code	Size	Price
0101052	22x22mm	\$42.00/2000
0101192	24x40mm	\$42.50/1000
0101222	24x50mm	\$46.00/1000
0101232	24x55mm	\$54.00/1000
0101242	24x60mm	\$57.00/1000

### Feather Microtome Blades

S35 MICROTOME BLADES FEATHER (50/PACK)  
 R35 MICROTOME BLADES FEATHER (50/PACK)

1-29 Packs \$125.00/pack  
 30-99 Packs \$120.00/pack 100+ Packs \$115.00/Pack



### Trimming Blades

F130 Trimming Knife 130mm (50/PACK)  
 1-9 Packs \$130.00/pack 10+ Packs \$110.00/pack

F260 Trimming Knife 260mm (50/PACK)  
 1-9 Packs \$325.00/pack 10+ Packs \$295.00/pack

### Manual Staining Station

The EZ-Quick Slide Staining Set is designed for easily and quickly staining of H&E slides, special stain slides and IHC counterstain slides. The set is light and portable, weighs only 3 lbs. It only occupies a little space on your bench top (size: 14x10x4 in). The whole set comes with one Stainless Steel Holder and twelve solvent (alcohol, xylene) resistant plastic Slide Staining Dishes. Two solvent resistant Slide Staining Racks are also included with each holds up to 24 regular 75x25x1mm microscope slides.

Temperature range of -70°C to +100 °C

The set consists of

- One Stainless Steel Holder
- Twelve Slide Staining Dishes
- Two Slide Staining Racks

IW-2510 Staining Set \$395ea  
 Accessories:  
 IW-2511 Staining Dish \$29ea  
 IW-2512 Staining Rack \$39ea



## Cytology Centrifuge

CYT12 with touch screen LCD display Complete with 12 place rotor and starter pack

**\$7,950ea**

Speed 500-2000Rpm  
 Max Rcf 525G  
 Timer 0-99 Minutes + hold  
 Dims HWD 27x33x46cm

### Features:

LCD touch screen display 10 acceleration rates, 10 Deceleration rates, 108 program memory Run is speed or RCF (G force) & W2t plus for true repeatability Using centrifugal force to separate and deposit a monolayer of cells on slides while maintaining cellular integrity within a clearly defined area FROM ANY FLUID MATRIX.

Cytocentrifugation also constructively flattens cells for excellent nuclear presentation. Our tilting action during spinning successfully centrifuges cells onto the deposition area of the slide giving all cell types equal opportunity for presentation.

Applications include cytology/histology, haematology/oncology, immunochemistry, virology/serology and microbiology.



## PARAFFIN TRIMMER FOR HISTOLOGY CASSETTES

This block wax trimmer is an efficient appliance for removing excess paraffin from embedding tissue cassettes. This wax trimmer can be used with all sizes of biopsy and mega cassettes. The grooved, heated surface channels melted wax into a removable collection tray that stays in place at the base of the unit by magnetic contact. Disposable plastic liners are included to insert inside the collection tray for easy disposal of the runoff wax. There are two heat settings on the side of the cabinet; low is approximately 80°C and high is 90°C.

### Specifications

Dimensions (including tray): 152 x 285 x 203mm (WxDxH)

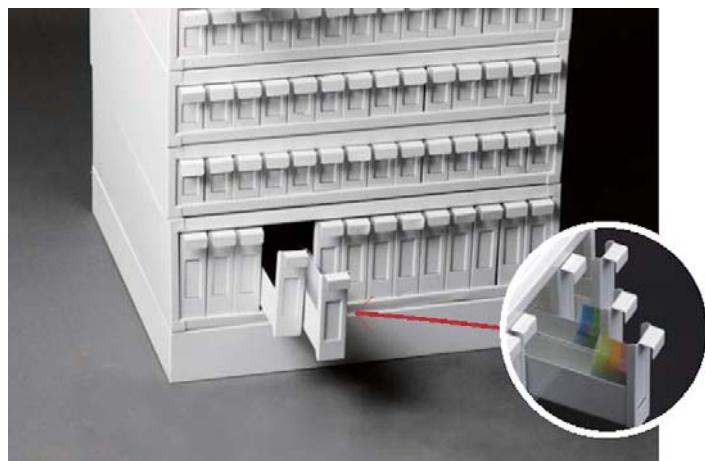
Electrical: 230V/50Hz, 150W

**XH-90**

**\$475ea**



## Microscope Slide and Paraffin Block Storage



51040010	Base for Storage cabinet ext dimensions, 485x480x26mm, Metal, 485x480x26mm, Metal, White Powder Coated	<b>\$40.00ea</b>
51040040	Lid for Storage cabinet ext dimensions, 485x480x26mm, Metal, White Powder Coated	<b>\$30.00ea</b>
51045001	Slide Storage Cabinet, stackable, each unit contains 14 drawers and Approx. 400 slides ext dimensions, 485x480x126mm, Metal, White Powder Coated	<b>\$295.00ea</b>
51040801	Paraffin Block Storage Cabinet, stackable, each unit contains 14 drawers And approx. 65 Paraffin Blocks ext dimensions, 485x480x126mm, Metal, White Powder Coated	<b>\$245.00ea</b>
51040042	Megalev slide/cassette stopper, magnetic Stainless Steel for keeping slides or blocks in upright position	<b>\$10.00ea</b>

## Purpath Histopathology Instruments



Visit our website and download the full brochures from the Catalogue area: [www.hurstscientific.com.au](http://www.hurstscientific.com.au)

Visit us at the National Histology Conference 2013 at the Crown Conference Centre in Melbourne 26-28th April

ALL PRICES QUOTED ARE EXCLUSIVE OF DELIVERY AND GST CHARGES

Delivery charges to outer metropolitan areas will incur additional charges over our standard metro charge of \$25.00/order.

Some of the advertised items are indent only and will be purchased for delivery by air freight



## NATIONAL HISTOLOGY CONFERENCE 2013

### 'Experience Melbourne!'

*A small selection of unique Melbourne experiences are being finalised now to fill in your Thursday (April 25th) and Friday (April 26th) if you are not attending the workshops.*

For all bookings or further information, please contact Nikki Thomas at [nikki@infront.com.au](mailto:nikki@infront.com.au) or call (08) 8362 9844. Payment will also need to be made in advance to confirm booking.

### MELBOURNE OUTLET SHOPPING TOUR | 'Bargains & Bubbles' | \$84 pp

---

**(Operates on Wednesday 25 & Friday 26 April only)**

Enjoy a relaxed and fun day of discount retail therapy without the worry of carrying bags or finding directions. Explore Melbourne's famous discount clothing outlet streets, back street warehouses, pop-up sales, fashion, bag & shoe shops and hard-to-find warehouse sales.

**TOURS OPERATE:** 9am-5pm

**TOURS DEPART:** From next to The Forum Theatre on Russell Street, between Flinders Street & Flinders Lane and selected hotel pick ups – we will advise at time of booking.

**TOUR PRICE:** \$84 per adult and \$63 per child (0-14 years)

**TOUR INCLUDES:** Melbourne Shopoholic Tour Host, Shopping List, Cafe Lunch with a glass of bubbles.

### WINEBUS TOUR | \$110.00 pp

---

**(Operates daily, including Thursday, April 25 - Public Holiday)**

You'll be visiting four wineries with four private tastings. Your wine tour guide will take you on a winery tour of Domaine Chandon, showing you how the bubbles get inside a bottle of bubbly. Here's what's included:

- Wine tastings at four premium wineries.
- Morning tour of Domaine Chandon winery with glass of sparkling wine and complimentary nibbles.
- One course à la carte lunch at the new Oakridge Winery restaurant, includes tastings and a full glass of wine with lunch, tea & coffee.
- Cider and wine tastings at Punt Road Winery.
- More wine tastings at Yering Station, Yering Farm, Sticks, Soumah or Maddens Rise.
- Experienced wine tour guide.
- Small groups (4-13) Limited Melbourne CBD & St.Kilda pick-ups.

***Four Great Wineries, One Grape Day!***



## NATIONAL HISTOLOGY CONFERENCE 2013

### AFL ANZAC DAY CLASH\* | \$295.00 pp

(\*Subject to availability- bookings upon request)

---

Ever wanted to go a really big game of Australian Rules football (The AFL) at the iconic MCG?

The conference committee have managed to secure a limited number of special corporate tickets to the historic Anzac Day clash between rival Melbourne Football Clubs Collingwood and Essendon to be played on Anzac Day (Thu 25 April, 2013).

The Olympic Terrace package is **\$295 per person** and includes:

- Entry ticketing
- Pre match BBQ with premium alcoholic and non alcoholic beverages on the Olympic Terrace
- Reserved seats (currently on Level 4 but subject to change)
- MCG refreshment pack
- Official event programs

Should you wish to take up this offer, please contact InFront Events (the conference organisers) urgently with your name and credit card details on **(08) 8362 9844** and we will reserve your special seat for this historic event!

**Bookings for this AFL game are now 'on request' only and subject to availability at the time of booking.**



# NATIONAL HISTOLOGY CONFERENCE 2013

## Conference Program

*National Histology Conference Program final as of 18<sup>th</sup> March 2013. Program may be subject to change and the Conference Organisers and/or organising Committee will endeavour to let you know prior to the Conference.*

### Friday 26<sup>th</sup> April 2013 - Workshops

8.00		<b>Registration Desk Opens</b> (will close at 6.00pm)
10.00	Dr Guy Orchard / Mohammed Shams	<b>Workshop #1:</b> MOHS Technique (Advanced)
10.00	Dr Thomas Haas	<b>Workshop #2:</b> Tissue identification for the Histologist (Basic)
14.00	Dr Thomas Haas	<b>Workshop #3:</b> Stalking the big Four: New developments in the diagnosis of breast, prostate, colon and lung carcinomas (Advanced)
14.00	Jason Kelly / Alex Laslowski / Mark Bromley / Rita Au	<b>Workshop #4:</b> Basic Immunohistochemistry Stain Identification: Focus on stain identification & Recognition of some popular antibody markers (Basic)
18.00	Social Function	<b>Welcome Reception</b>   Exhibition Hall: Crown Conference Centre

### Saturday 27<sup>th</sup> April 2013

7.30		<b>Registration Desk Opens</b>
9.00	Adrian Warmington	Welcome
9.10	Dr Rowan Story	The Role of Health Reserves in the Defence of Australia
9.50	Keith Byron	Introduction to Molecular Techniques
10.35		<b>Morning Tea</b>
11.05	Tony Van Galen	Laboratory practices for the diagnosis and management of prostate cancer
11.35	Mark Koina	Electron Microscopy diagnosis and infectious diseases – the ACT Pathology Experience
12.05	Dr Guy Orchard	IHC Diagnosis of Malignant Melanoma
12.50	Anne Prins	"Animal, Vegetable, mineral or....?"
13.20		<b>Lunch</b>
14.10	Piero Nelva / Dr Beena Kumar	Technical aspects related to Breast cancer diagnosis
14.55	Natalie Kvalheim	Abalone virus ISH
15.25	Soeun Mom	Male infertility : Testicular biopsies
15.45		<b>Afternoon Tea</b>
16.15	MyHoa Huynh	GVHD: An Introduction
16.35	Nina Fotinatos	Career paths/ research opportunities post MLS
19.00	Social Function	<b>Conference Gala Dinner</b>   River Room: Crown Entertainment



Histology Group of Victoria Inc.

InFrontEvents Australia  
108 Magill Road,  
NORWOOD SA 5067  
AUSTRALIA

Phone: +61 (0)8 83629844  
Fax: +61 (0)8 8362 4377  
E-Mail: [events@infront.com.au](mailto:events@infront.com.au)  
Web Page: [www.infront.com.au](http://www.infront.com.au)



# NATIONAL HISTOLOGY CONFERENCE 2013

Complex

Sunday 28<sup>th</sup> April 2013

8.30		<b>Registration Desk Opens</b>
9.30	Naomi McCallum	EM diagnosis : Neuropathology case studies
10.00	Dr Thomas Haas / Heather Renko	SLN: A look at the significance from a Histotech's perspective
11.00		<b>Morning Tea</b>
11.30	Suzanne Svobodova	Companion diagnostic molecular testing for BRAF, KRAS and EGFR
12.00	David Gan	Making the most of your specimen in IHC
12.30	Andrew Griffin	NATA: Aspects of the standard in reference to laboratory accreditation
13.00		<b>Lunch</b>
14.00	Professor Peter Choong	Targeted therapies in sarcoma
14.30	Sarah Morabito	Leishmaniasis
15.00	Greg Jenkins	Histology disasters



## NATIONAL HISTOLOGY CONFERENCE **2013**

### Registration Form

26-28 April 2013

Crown Conference Centre, Melbourne



### Venue

The National Histology Conference 2013 will be held at the Crown Conference Centre which is located at 8 Whiteman Street, Southbank, Victoria.

### Car Parking

Free car parking will be available at Crown Conference Centre should you require this please advise InFront Events Australia, as spaces must be booked in advance to receive complimentary parking.

### Registration Payments and Inclusions

All prices are listed in Australian dollars (AUD), and are GST inclusive.

### Full package registrations include

- Attendance to all sessions of the conference
- All conference documentation
- Conference satchel
- Catering as per program
- Welcome Reception on Friday 26th of April
- Conference Gala Dinner on Saturday 27th of April
- Does not include attendance to workshops on Friday 26th of April, these must be purchased separately

### Conference only registrations include

- Attendance to all sessions of the conference
- All conference documentation
- Conference satchel
- Catering as per program
- Welcome Reception on Friday 26th of April
- Does not include attendance to Conference Gala Dinner, tickets must be purchased separately for this
- Does not include attendance to workshops on Friday 26th of April, these must be purchased separately

### Day Registrations Include

- Attendance to all sessions on nominated day
- Conference satchel
- Catering as per program on nominated day
- Does not include attendance to social events, tickets must be purchased separately for this

### Conference Fees Do Not Include

- Travel to and from conference venue
- Insurance of any kind
- Hotel and other personal expenses (competitive room rates are available through InFront Events Australia)

### Early Bird

Early Bird is available until the 30th of November, full registration fees will be applicable from the 1st of December, 2012.

### Welcome Function

The Welcome Function is a great way for delegates to talk to exhibitors and manufacturer's in a relaxed and casual environment, there will be nibbles and drinks provided.

### Conference Gala Dinner

The Conference Gala Dinner will be held in the River View Room in the Crown Casino, watch the iconic Melbourne flames on the Promenade from the balcony, enjoy a three course meal and some great entertainment with industry fellows.

### Payment Policy

Full payment must accompany the registration form, for your registration to be confirmed.

### Cancellation policy

All cancellations must be notified in writing to Conference Managers, InFront Events Australia. Cancellations prior to December 1, 2012 will receive a 50% refund of total registration fees. Refunds for cancellations made after December 1, 2012 will only be made in exceptional circumstances. Accommodation refunds are subject to the terms and conditions of each hotel, please contact InFront Events Australia if you wish to find out more about these terms and conditions.

### Liability Disclaimer

In the event of industrial disruption or other unforeseen circumstance, the Conference Organisers accept no responsibility for loss of money incurred by delegates, exhibitors or sponsors.

### Further Information

For further information on terms of registration and up to date information on speakers, sponsor and conference program, please refer to the conference website:

[www.nationalhistologyconference.com.au](http://www.nationalhistologyconference.com.au)

### Registration Desk

All exhibitors, delegates and participants will be required to visit the registration desk prior to entering the conference areas and functions, on your first day only. The registration desk will be located in the ground foyer of the Crown Conference Centre on Whiteman Street.

### Accommodation

#### Melbourne ShortStay Apartments – Southbank Deluxe

The Melbourne ShortStay Apartments at Southbank Deluxe have a fully equipped kitchen with a gas cook top and dishwasher. Broadband is available in the room and each room has 26 Foxtel channels. The hotel has a stunning garden terrace with a heated indoor pool, with a gymnasium for those who like to keep fit.

#### Crown Promenade Hotel

Set in the heart of South Wharf, conveniently located within the building of the conference venue. Each of their modern guest rooms and suites have been innovatively designed, and includes internet access for one device.

#### Holiday Inn

The Holiday Inn is conveniently located a "stone's throw" away from the trendy Southbank area. Swim a few laps in their heated pool or steam away stress in their sauna.

#### Travel Lodge

The Hotel is within easy walking distance to great restaurants and cafés (chargeback facilities available with some restaurants in Southbank), impressive shopping, renowned art galleries and the Crown Casino.

### Melbourne

Just when you think you've got Melbourne figured out, you'll uncover one more pocket of the CBD with a particular vibe that makes it feel so right to lose another three hours or so.

While fairly compact in size, Melbourne's CBD is split into distinct areas, each with its own fortes and flavours. Bourke Street Mall offers no-strings-attached retail therapy, Chinatown is all dumplings and heritage, Collins Street knows how posh you really are, Flinders quarter squeezes your creative juices, and the sports precinct's fever is contagious. The alleys and laneways, conventional and vertical, make their own rules, and encourage you to break them.

Go on, just look around one more corner, so it might be a good idea to extend your stay!



## Personal Details

Title: Dr / Prof / Mr / Mrs / Ms / Miss / Other

First Name

Surname

Position

Organisation

Address

Suburb / City

State

Postcode

Country (If other than Australia)

Email

Mobile

Phone

Fax

Other Requirements (e.g Dietary, Wheelchair access, Hearing Loop, etc)

Will you require onsite car parking at Crown Conference Centre

Yes ☐ No ☐

Number Plate

☐ I authorise Histology Group of Victoria to keep me informed about future events and promotions (Please Tick)

☐ I authorise my contact details to be provided to registered Exhibitors and Sponsors of the Histology Conference 2013 (Please Tick)

☐ I authorise for my name and contact details to be published in the conference brochure (Please Tick)

## Registration Details

### Registration Type:

☐ Early Bird Delegate – Full Package \$570.00

Available until 28th of February, 2013

☐ Early Bird Delegate – Conference Only \$450.00

Available until 28th of February, 2013

☐ Delegate – Full Package \$720.00

Applicable from 1st of March, 2013

☐ Delegate – Conference Only \$600.00

Applicable from 1st of March, 2013

☐ Student Delegate \$100.00

### Day Registration:

☐ Early Bird Saturday Only Registration \$270.00

Available until 28th of February, 2013

☐ Early Bird Sunday Only Registration \$180.00

Available until 28th of February, 2013

☐ Saturday Only Registration \$360.00

Applicable from 1st of March, 2013

☐ Sunday Only Registration \$240.00

Applicable from 1st of March, 2013

☐ Student Day Registration (Please Circle) \$50.00  
Saturday Sunday

### Friday Workshop:

All Workshops are \$95 each

☐ Workshop 1 – MOHS - Guy Orchard PhD (Advanced)

☐ Workshop 2 – Stalking the Big Four: New developments in the diagnosis of breast, prostate, colon and lung carcinomas -Thomas Haas DO (Advanced)

☐ Workshop 3 – Tissue Identification - Thomas Haas DO (Basic)

☐ Workshop 4 – Immunohistochemistry Stain Identification - Various (Basic)

### Social Program:

#### Welcome Function:

If you have purchased a Full Package or Conference Only registration please indicate by ticking the box below should you wish to attend the Welcome Function, which is included in the registration cost. A non-marked box will be listed as a non-attende.

☐ Welcome Function

If you have purchased a Day or Student Registration or wish to purchase additional tickets for non-delegates to the Welcome Function please indicate below:

☐ Welcome Function additional tickets \_\_\_\_\_ \$80.00

Please outline the number of tickets required

#### Conference Gala Dinner:

If you have purchased a Full Package Registration, the Conference Gala Dinner is included in the registration cost. All other delegates wishing to attend the Conference Gala Dinner or for additional tickets for partners or colleagues please indicate below:

☐ Conference Gala Dinner Tickets \_\_\_\_\_ \$120.00

Please outline the number tickets required



## Accommodation Details

Arrival Date

Departure Date

Length of Stay

Name of Person/s Sharing Room (if applicable)

All locations have been selected as they are all within walking distance to the conference venue

### Holiday Inn Melbourne on Flinders

575 Flinders Lane, Melbourne

☐ \$220.00 Standard Room

Room Type	Bedding Configuration	Bathroom	Max people
Standard	1 x Queen Bed	1	2

### Crown Promenade Hotel

8 Whiteman Street, Southbank Melbourne

☐ \$250.00 Standard Room

Room Type	Bedding Configuration	Bathroom	Max people
Standard King	1 x King Bed	1	2
Standard Queen	2 x Queen Bed	1	3

### Melbourne ShortStay Apartments – Deluxe

63 Whiteman Street, Southbank, Melbourne

☐ \$235.00 Condo Room

☐ \$349.00 Executive Room

☐ \$462.00 Superior Room

Room configuration (please tick)

☐ Queen ☐ Twin

Room Type	Bedding Configuration	Bathroom	Max people
Condo	1 x Queen Bed	1	2
Executive	2 x Queen Bed	2	4
Superior	2 x Queen Beds and 2 x Single Beds	2	6

### Travelodge Southbank

9 Riverside Quay, Southbank

☐ \$140.00 Standard Room

Room Type	Bedding Configuration	Bathroom	Max people
Standard	1 x Queen Bed 1 x Double Sofa Bed	1	2

## Payment Summary

Registration Sub Total \$

Social Program Sub Total \$

Accommodation Sub Total \$

Total Amount Payable \$

## Payment Details

I would like to make payment by (Please Tick)

☐ Cheque Made payable to InFront Events Australia Pty Ltd

☐ E.F.T.

Account Name : In Front Events Australia

BSB: 085-458

Account Number: 823167020

A remittance advice must be provided for your payment to be credited and please ensure you reference payment with your full name

☐ Credit Card (4% Merchant fee applicable)

Card Type Visa / MasterCard

Credit Card Number

Expiry Date

Card Holders Name

Signature

## Return and Further Details

Please return this form with payment to:

National Histology Conference 2013 C/- In Front Events Australia

108 Magill Road Norwood, SA, 5067

Phone: (08) 83629844 / Fax: (08) 83624377 / Email: events@infront.com.au

## Agreement to Terms and Conditions

I wish to register for the 2013 National Histology Conference and I acknowledge the registration terms and conditions including the cancellation policy

Signature

## HGV TRIVIA NIGHT 2013

**Date:** Friday 26th July

**Time:** 6:30 to 10:30pm

**Location:** The Colonial Hotel  
via Southern Cross station  
240 King St, Melbourne



**Price:** \$25 per person (Tables of 10)  
\*Includes sit down dinner  
\*Trade sponsored prizes and rounds with a professional host  
\*Drinks at Bar Prices

Payment by **26th June**. Please be quick as tables are limited and sold on a first in best dressed basis!

Parking is available for guests along King Street and Lonsdale Street, right outside the door! Alternatively Parking is available one block away at Southern Cross Station.



**PAYMENT DETAILS**  
**PLEASE RETURN THIS SLIP WITH YOUR GROUP**  
**PAYMENT**

**Email:** [kellie.vukovic@petermac.org](mailto:kellie.vukovic@petermac.org)

**Mail:** Attention: Kellie Vukovic  
Peter MacCallum  
Level 1 Smorgan Family Building  
Crn St Andrews Place and Lansdown St  
East Melbourne 3002

**Cheque/Money Order** (please make out to 'Histology Group of Victoria')

**Direct deposit** (please leave name as a reference)

Account Name: Histology Group of Victoria  
BSB: 063 449  
Account no.: 10065881

---

Please forward this information to Kellie Vukovic via mail or email listed above after payment.

Name of Institution: \_\_\_\_\_

Contact Name: \_\_\_\_\_

Contact Number: \_\_\_\_\_

Number of people on table: \_\_\_\_\_

# TekEquipment

a division of

## TekMed

### GrossPath GP-1500 Down-Draft Grossing Workstation



#### INTEGRATED ACTIVE CARBON AIR RECIRCULATION FILTER

- Compact
- Pollution-free
- Simple Installation
- No need to install a costly ducted ventilation system

Now Available in Height Adjustable

[www.TekEquipment.com.au](http://www.TekEquipment.com.au)

1300 368 138

[info@tekequipment.com.au](mailto:info@tekequipment.com.au)

# Medical and Autopsy Saws



240V  
Corded Models

Battery Operated  
Models



Vacuum  
Unit



Blades



Vacuum Unit  
& Submersible Saw





Histology Group of Victoria Inc.  
Org. No. A0035235F

## Future Events:

# 2013

### **Thursday 21<sup>st</sup> February**

~~Combined HGV/ASC Scientific Meeting-Student Presentations~~

~~Venue: The Royal Dental Hospital  
720 Swanston St., Carlton~~

### **Friday, 15<sup>th</sup> March**

~~Lawn Bowls~~

~~Venue: Fitzroy Bowling and Sports Club  
578 Brunswick St, Fitzroy North~~

### **April 26-28**

National Histology Conference 2013

Venue: Crown Conference Centre, Melbourne

### **Thursday, 30<sup>th</sup> May**

3<sup>rd</sup> International Workshop in Diagnostic Immunohistochemistry

Venue: Sydney

### **Friday 26<sup>th</sup> July**

Trivia night

Venue: Colonial Hotel

240 King St, Melbourne VIC 3000

### **September 2-4**

AIMS meeting

Venue: Grand Hyatt Melbourne

### **September 20-25**

NSH Symposium Convention

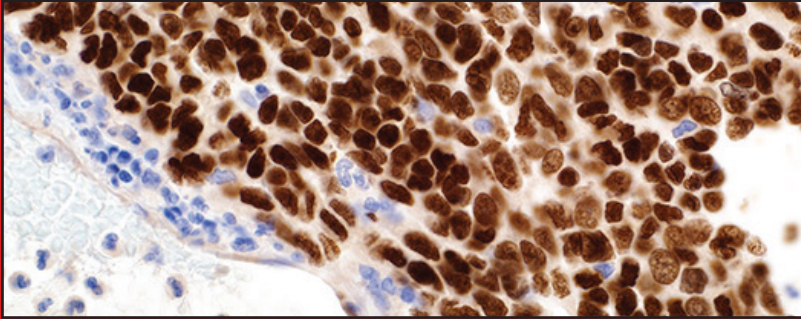
Venue: Providence, Rhode Island, USA

### **Thursday 14<sup>th</sup> November**

Scientific Meeting/AGM

Venue: Peter Mac

## SOX-10



SOX-10 on Melanoma

- A sensitive marker for melanoma, including conventional, spindle cell and desmoplastic subtypes
- Nuclear expression does not interfere with melanin naturally found in the cytoplasm
- Superior to other immunostains in detecting residual invasive and in situ melanoma
- Useful marker in detecting both the in situ and invasive components of desmoplastic melanoma

Antibody unique to Cell Marque

From Passion to Product to Patient®

## LOGOS J



NEW

The first “personal” hybrid tissue processor

- Improving the workflow of the laboratory
- Unmatched quality
- Unmatched processing times
- Unmatched processing flexibility
- Fully automated bone marrow processing for a diagnosis in less than 24 hours
- Green, safe and economical



# SOUTHERN CROSS SCIENCE PTY LTD

Southern Cross Science Pty Ltd is a Laboratory wholesale company based in South Australia & has been in operation for over 25 years.

Southern Cross Science Pty Ltd supplies a full range of Microscope Slides, Cover Slips, Specimen Containers, Embedded Cassettes, Solvents, General & Specialty Chemicals as well as a full range of laboratory equipment & consumables



Marienfeld Superior glassware stocked in Australia by Southern Cross Science Pty Ltd

For over 90 years the Marienfeld Superior range of slides & coverslips have been synonym for quality and reliability. Marienfeld Superior's comprehensive range of quality laboratory glassware such as microscope slides, coverslips, counting chambers, capillary tubes, laboratory containers and volumetric glassware has made the Marienfeld Superior name and brand renowned internationally.



Techno-Plas, Excellence in Plastic Consumables and Custom Moulding. Manufacturing a range of injection moulded plasticware for Laboratory, Medical & Hospital, Food & Beverage, Industrial & Mining, Environmental and Pharmaceutical & Cosmetic industries



Chem-Supply, manufacture the Chem-Supply range of chemicals & are the Australian distributor for the Scharlau, Burdick & Jackson, (B&J) & RCI Labscan range of laboratory chemicals



**For all your Pathology & Laboratory requirements please contact us or visit us at Booth 13 at the National Histology Conference.**

## Southern Cross Science Pty Ltd

13 Tooronga Avenue Edwardstown SA 5039

Ph: (08) 8277 1541 Fax: (08) 8277 3311

Email: [sales@southerncrossscience.com.au](mailto:sales@southerncrossscience.com.au)

[www.southerncrossscience.com.au](http://www.southerncrossscience.com.au)



## BenchMark Special Stains Automation: it feels this good

The **NEW** VENTANA BenchMark Special Stains brings you complete baking-through-staining automation for histology special stains, so you can count on excellent quality and speed.

- Workflow efficiency – eliminates manual processes and temperature batching with automated deparaffinisation and independent slide heating
- Consistent quality – empowering high-quality stains every time
- Reduced risk – decrease technician risks with individual slide staining and reduced exposure to harmful chemicals

Please contact your local Roche Account Manager for any further information.

[www.roche.com](http://www.roche.com)

[www.ventana.com](http://www.ventana.com)



### VENTANA

Empowering | Special Stains Automation

Roche Diagnostics Australia Pty Ltd  
31 Victoria Ave, Castle Hill, NSW. 2154.  
ABN 29 003 001 205  
Tel: +61 2 9860-2222 Fax: +61 2 9860-2122

© 2013 Ventana Medical Systems, Inc.  
VENTANA, the VENTANA logo and BENCHMARK are trademarks of Roche. AU3010 1112A

